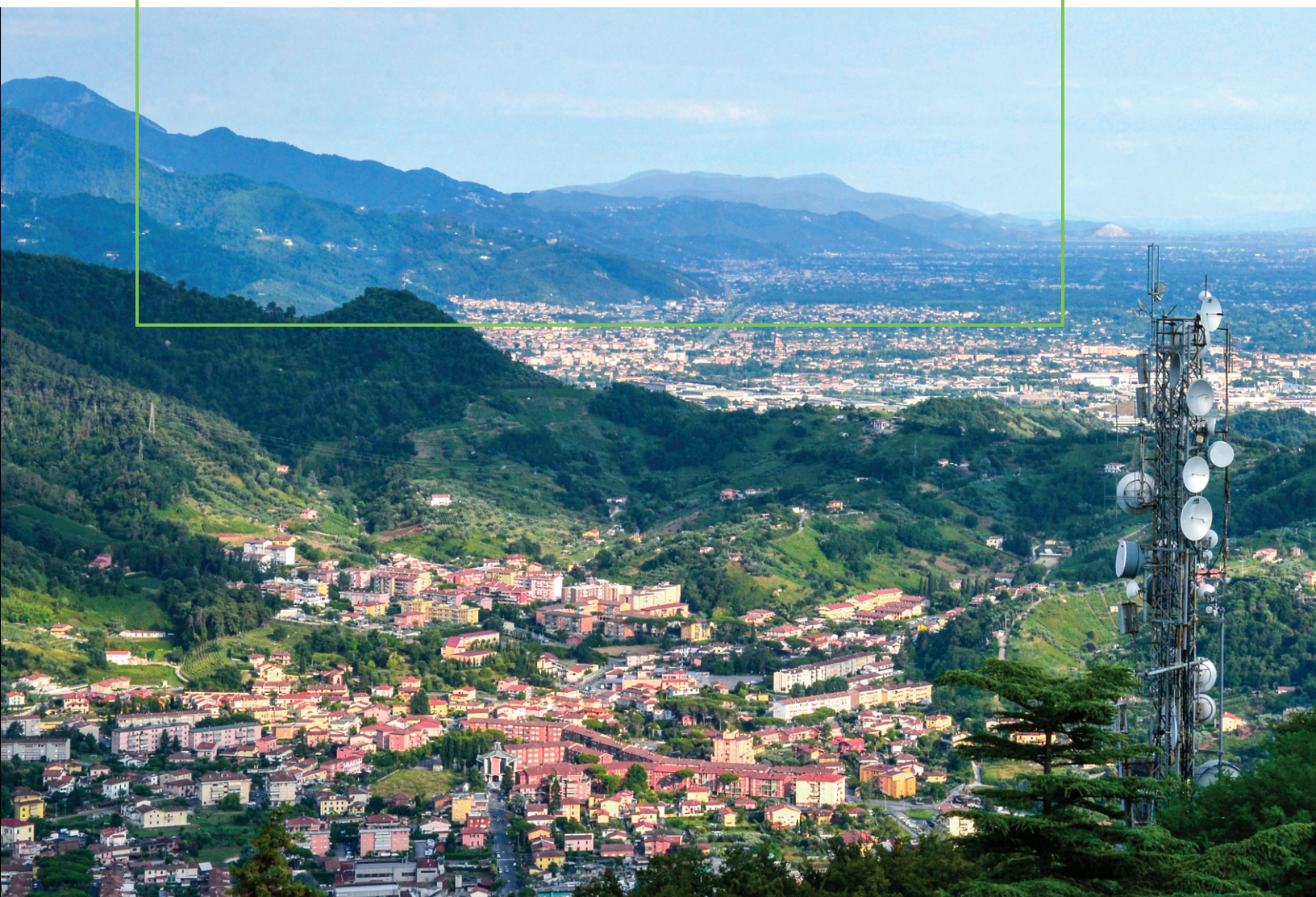




Gridstream Connect[®] Cellular Communications Solutions



Flexible, Interoperable Cellular Solutions for Utility IoT Networks

Landis+Gyr's cellular communication solutions for the Gridstream Connect utility IoT platform offer a cost-effective end-to-end option for smart grid communications. It integrates seamlessly with existing Gridstream Connect implementations, enhancing existing Mesh deployments without requiring costly upgrades.

Omni-Coverage Cellular Infrastructure

The end-to-end, worry-free turnkey deployment option compliments Landis+Gyr's best-in-class hardware and managed cloud services and features comprehensive cellular connectivity.

Through our omni-coverage solution, Landis+Gyr offers industry-best conditions and service level agreements for public cellular infrastructures that are otherwise available only with private infrastructure. This offers service levels beyond what a single carrier can provide, including a guarantee of service for the lifetime of cellular assets.

With Landis+Gyr's turnkey solution, the utility doesn't have to manage multiple contracts or separate meter inventory. Landis+Gyr's plug-and-play meters ensure resilient, full coverage – a single omni-carrier capable SKU can take advantage of multiple carrier network options, enabling automatic failover – if one network degrades or fails, the meter will switch automatically to another and continue transmitting.

The meters arrive at the utility configured and ready for installation, with no post-production configuration necessary. They perform auto-provisioning of the carrier network during installation, as well as auto-registration to the device and network management platforms.

The Landis+Gyr offering ensures there is no billing for undeployed meters, overages, or roaming charges. With this turnkey solution, the utility operates the device

manager, Landis+Gyr Command Center software, deploying the meters, conducting disconnects, and performing data extracts. Landis+Gyr can provide Cloud services (upgrades, disaster recovery, etc.), as well as end-to-end data and network operations management, while providing the utility with full visibility.

Public and Private LTE Deployment Options

Landis+Gyr's cellular communications can also be deployed via utility-managed public or private LTE networks in addition to the omni-coverage option. Meters can be ordered from Landis+Gyr pre-configured for utility-specific network options.

World Leader in IoT Communications

Landis+Gyr is a leader in IoT communications, with deployments supporting the full range of communication technologies, including cellular. For example, our deployment of 3.3 million cellular-enabled meters at Tokyo Electric Power Company (TEPCO), is a key piece of the largest utility IoT deployment in the world – featuring approximately 30 million connected devices.

Best-in-Class Cellular Meters

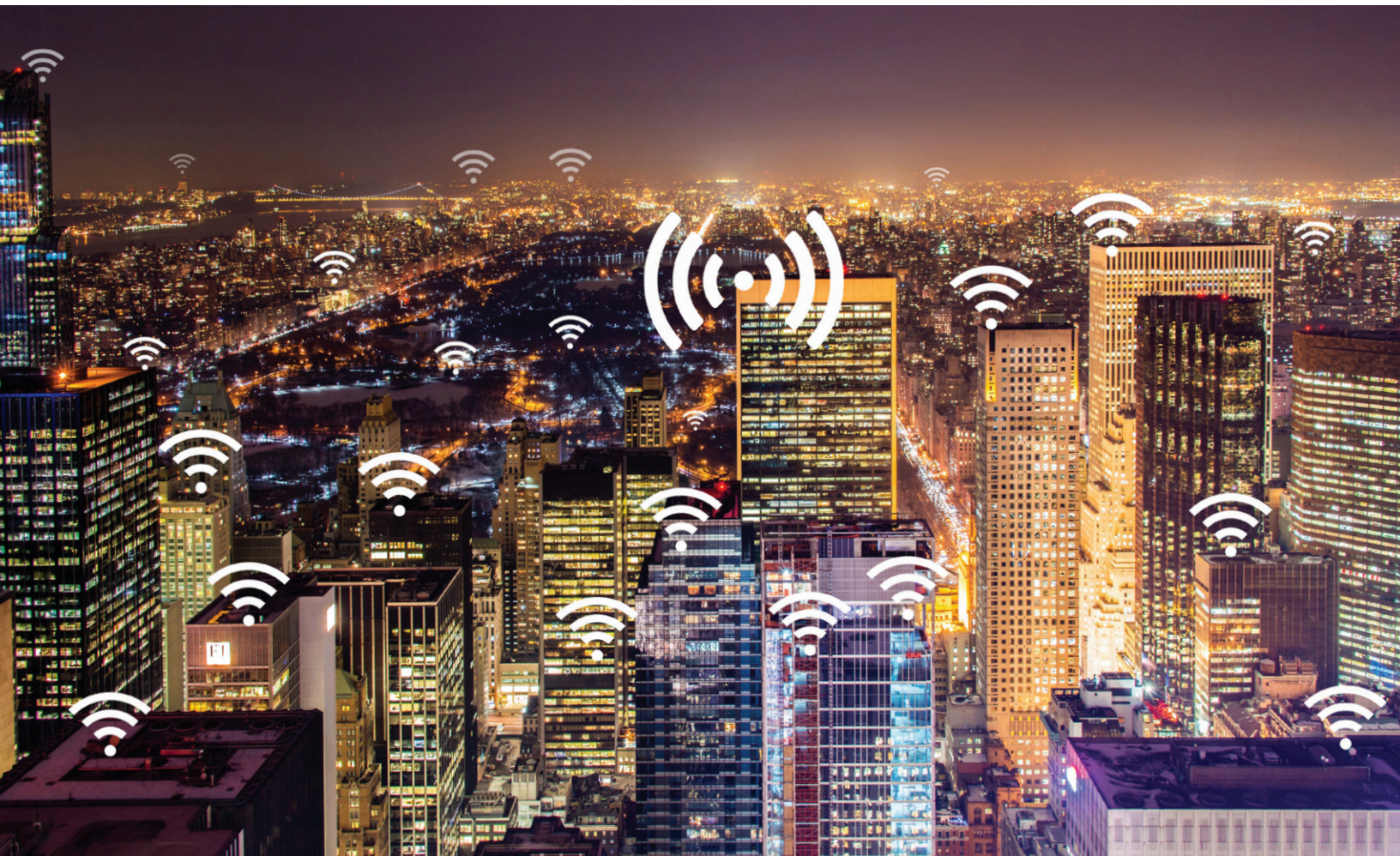
Landis+Gyr's industry-leading residential and commercial meters are cellular-enabled and support over-the-air firmware upgrades and meter reconfigurations.

This includes:

- Revelo E360 Residential and Revelo E660 Commercial IoT grid sensors with waveform streaming technology, real-time edge intelligence, and app development capabilities.
- All forms of the residential FOCUS AXe meter, including the E351 model with first-of-its-kind 320-amp disconnect switch.
- All forms of the S4x commercial meters, which can support both cellular and KYZ relay boards, and two sets of LP data, allowing the capture of 15-minute intervals of metrology data while simultaneously capturing 5-minute intervals of diagnostic data.

Reduce Total Cost of Ownership and Optimize Network Coverage

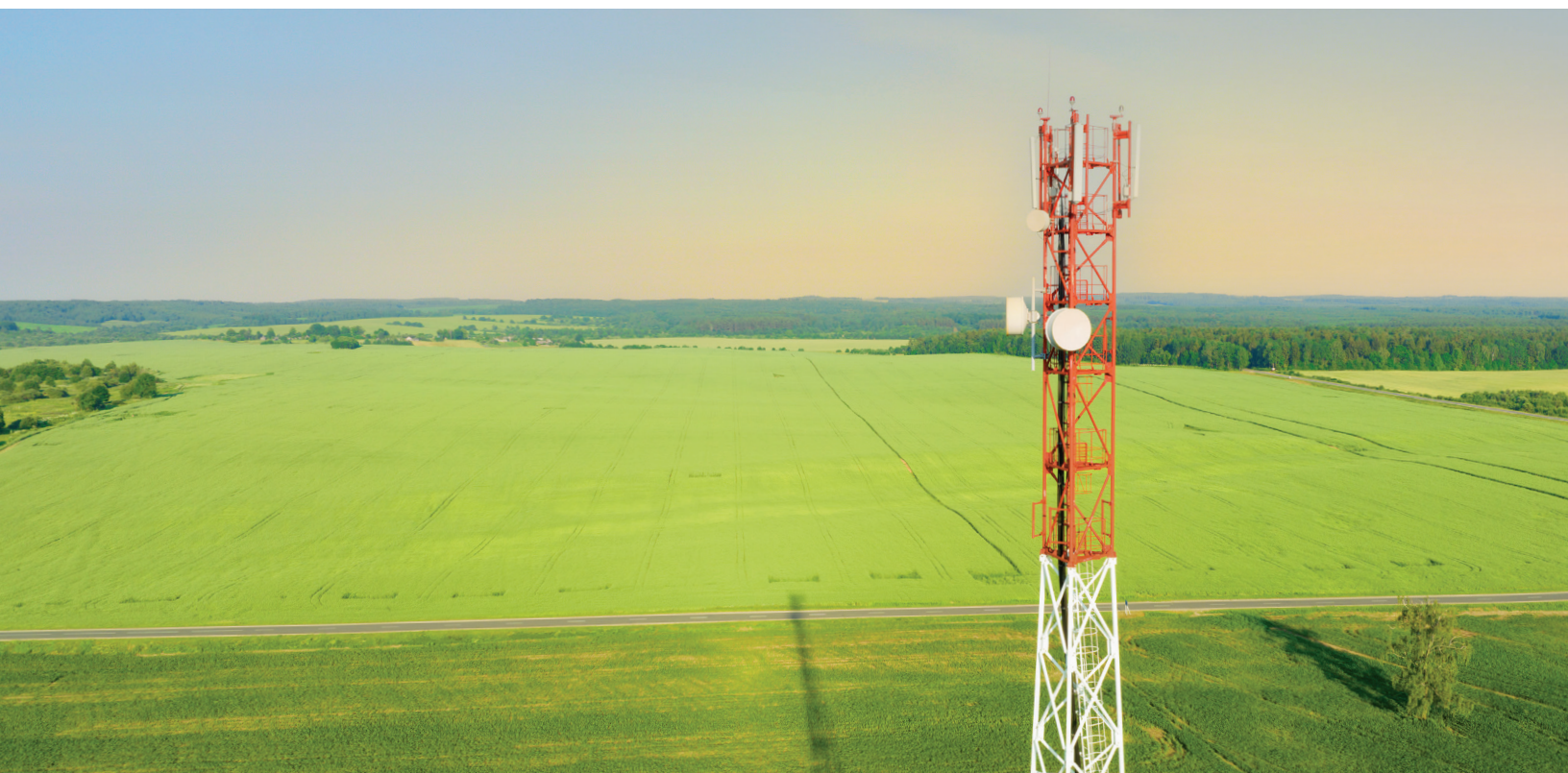
Now is the time to take advantage of Landis+Gyr's cellular solutions and streamline your network management, optimize coverage, and lower TCO for both residential and commercial needs. Utilities with Mesh connectivity can improve network cost and coverage by adding a cellular component. Cellular can be used to fill gaps in Mesh coverage without costly network infrastructure build-out. As utilities work to enhance grid edge capabilities for the future, Landis+Gyr's cellular solutions enable a seamless technology refresh, regardless of the existing network type.



Adaptable, Future-Ready Solutions

Landis+Gyr's LTE-M cellular solution features the latest generation of radio technology as defined by 3GPP, the standards body that manages the evolution of global cellular standards. Landis+Gyr's LTE-M cellular meters fall within the 3GPP Narrowband Cellular standard, Release 14, under the 5G standard, so that the meters coexist with 5G networks, supporting

the 4G to 5G migration plan while providing new and innovative capabilities. The meters optimize flexible and sustainable options for IoT communications, utilizing low power wide area (LPWA) radio technology for more efficient power usage and coverage, key factors in providing cost-effective cellular communications for smart metering.



Let's Build a Brighter Future Together.

Since 1896, Landis+Gyr has been a global leader of energy management solutions. We've provided more than 3,500 utility companies all over the world with the broadest portfolio of products and services in the industry. With a worldwide team of 1,300+ engineers and research professionals, as well as an ISO certification for quality and environmental processes, we are committed to improving energy efficiency, streamlining operations, and improving customer service for utility providers.