

**Products:** AIP-200 Optical Probe  
**Subject:** Notice of New AIP-200 Driver  
**Date:** 2/14/2012

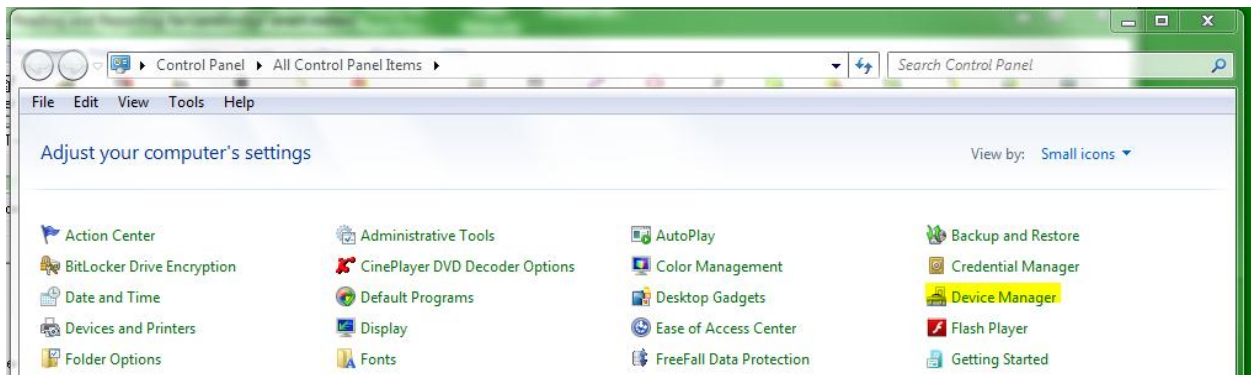
Landis+Gyr is pleased to announce a new driver for the AIP-200 Optical Probe. This new driver will work on both Windows 7 32-bit and 64-bit versions. A ZIP file containing the new driver can be found on the Landis+Gyr ePortal.

There is no need to change the driver on 32-bit versions of Windows 7. If you have a 32-bit version and choose to replace the old driver with this new driver, it is essential that the old AIP-200 driver is completely removed before installing the new driver. Windows XP users should keep their existing driver.

The first section of this Product Update Notice will illustrate the steps for removing the old driver on a 32-bit version of Windows 7. The second section contains the instructions for installing the new driver on both 64-bit and 32-bit versions of Windows 7.

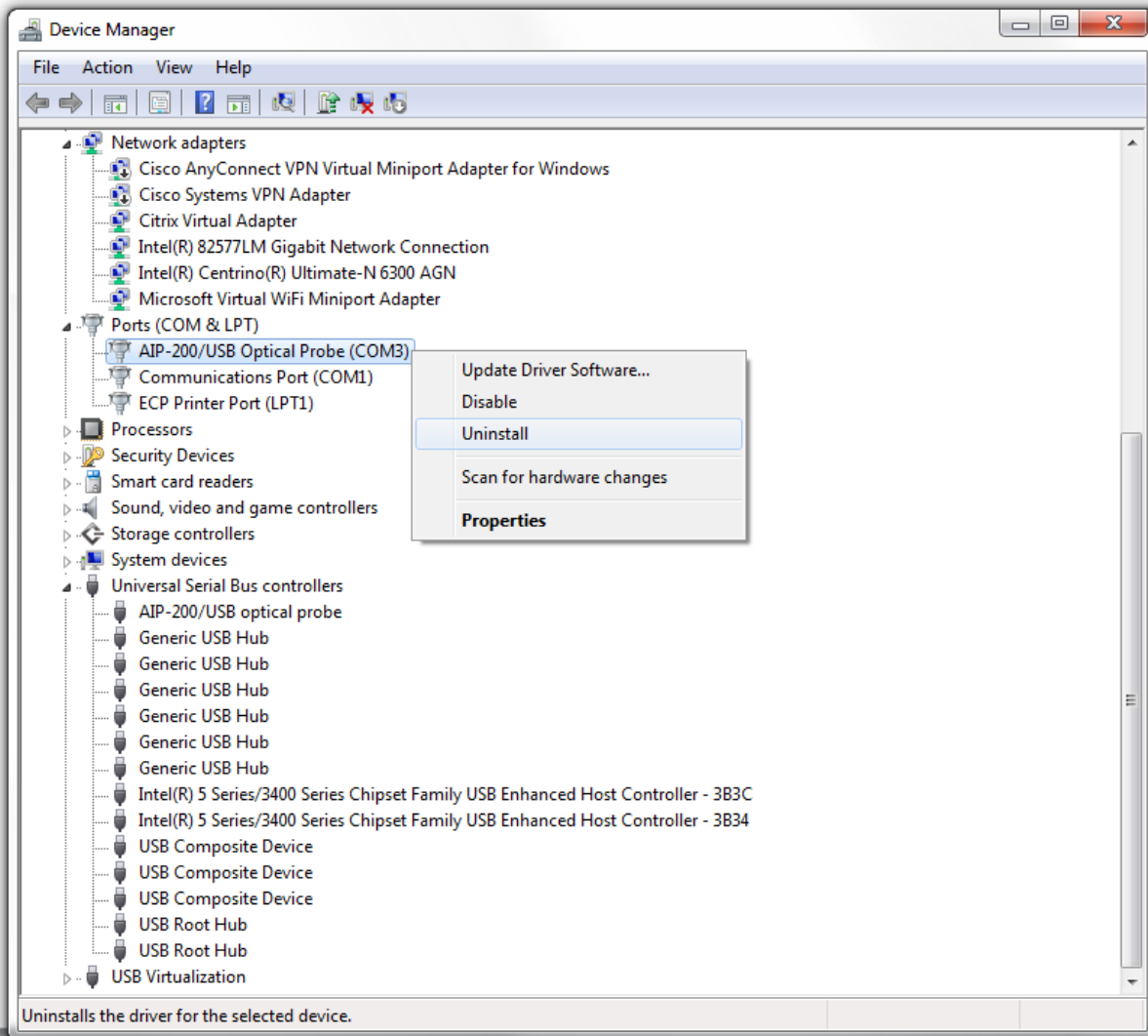
## Directions for Removing the Old AIP-200 Driver

1. Insert the AIP-200 optical probe so that the old driver can be uninstalled.
2. Open the “Device Manager” found in the Windows 7 Control Panel.



**Figure 1: Screenshot of the Device Manager shortcut in Control Panel where it is necessary to uninstall the old driver**

3. Right-click on the AIP-200 Com Port and select “Uninstall.”



**Figure 2: Screenshot of the Optical Probe Com Port and selection to uninstall the old driver**

4. Confirm that you wish to uninstall and delete the driver by checking the box and clicking OK.

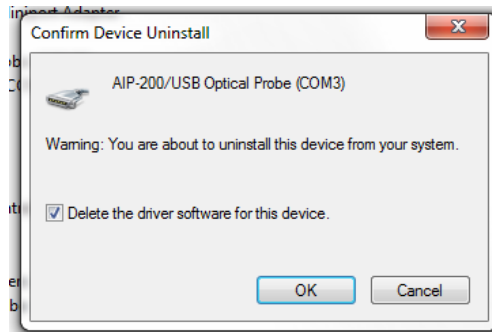


Figure 3: Screenshot of the warning message for old driver removal

5. Right-click on the AIP-200 USB Port and select “Uninstall.”

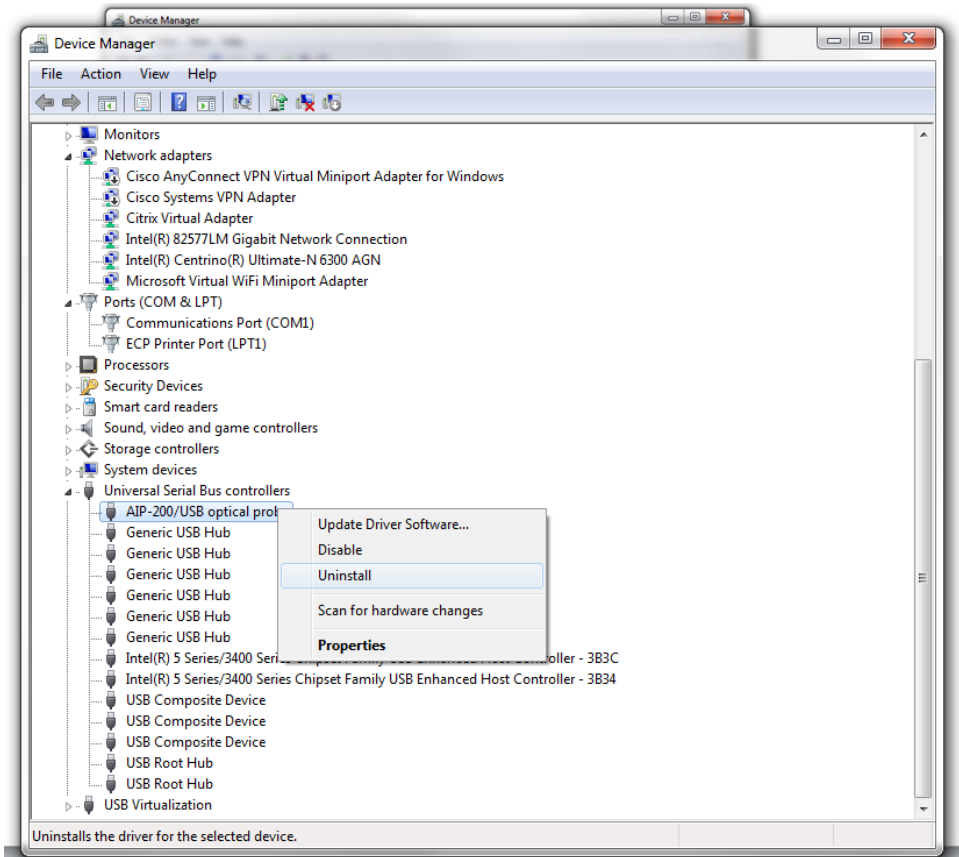


Figure 4: Screenshot of the Optical Probe USB Port and selection to uninstall the old driver

6. Confirm that you wish to uninstall and delete the driver by checking the box and clicking OK.

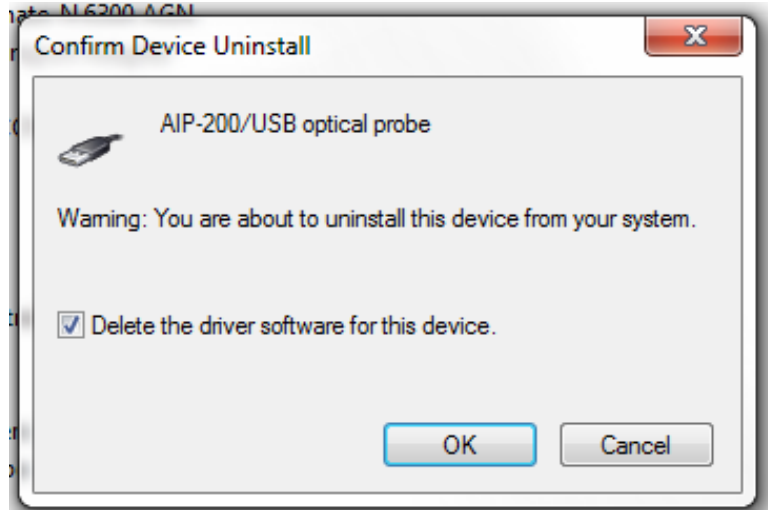


Figure 5: Screenshot of the warning message for old driver removal

## Directions for Installing the New AIP-200 Driver

1. Save the ZIP file containing the new AIP-200 driver to the computer. Unzip the driver to a folder. Note the folder name and location.
2. Remove and reinsert AIP-200 optical probe.

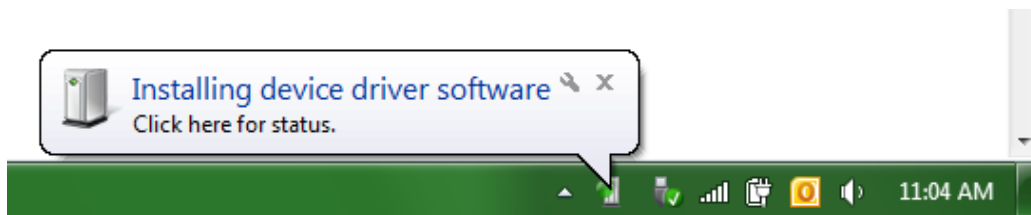
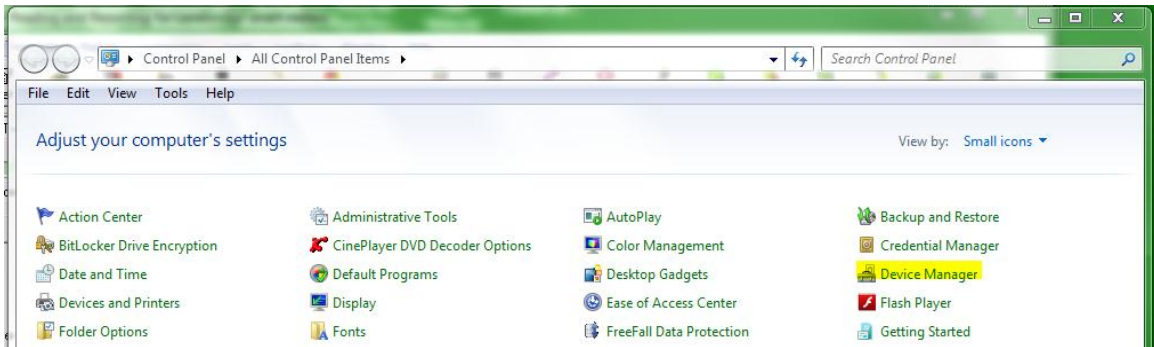


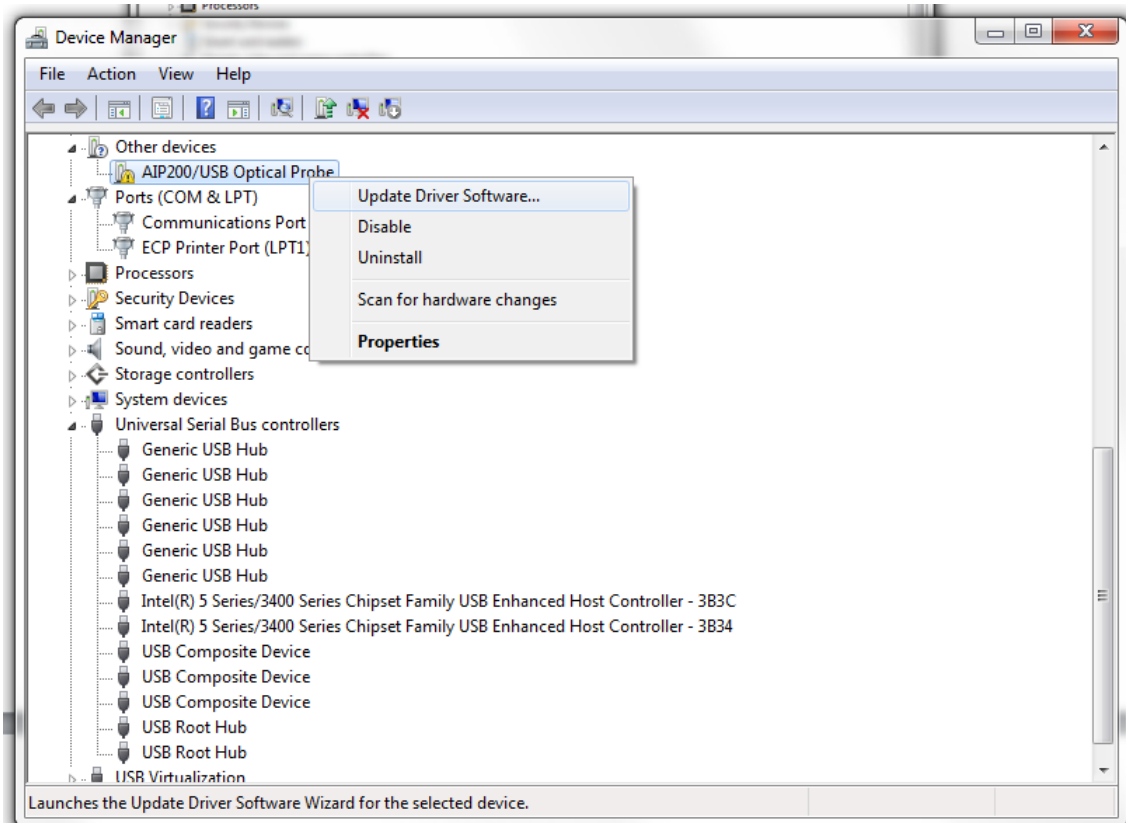
Figure 6: Typical notification that the unknown probe has been reinserted

3. Open the “Device Manager” found in the Windows 7 Control Panel.



**Figure 7: Screenshot of the Device Manager shortcut in Control Panel where it is possible to install the new driver**

4. Right-click on the non-operational AIP-200 USB Port and select “Update Driver Software.”



**Figure 8: Screenshot of the unrecognized USB Port where the driver can be added**

5. Select “Browse My Computer for Driver Software.”

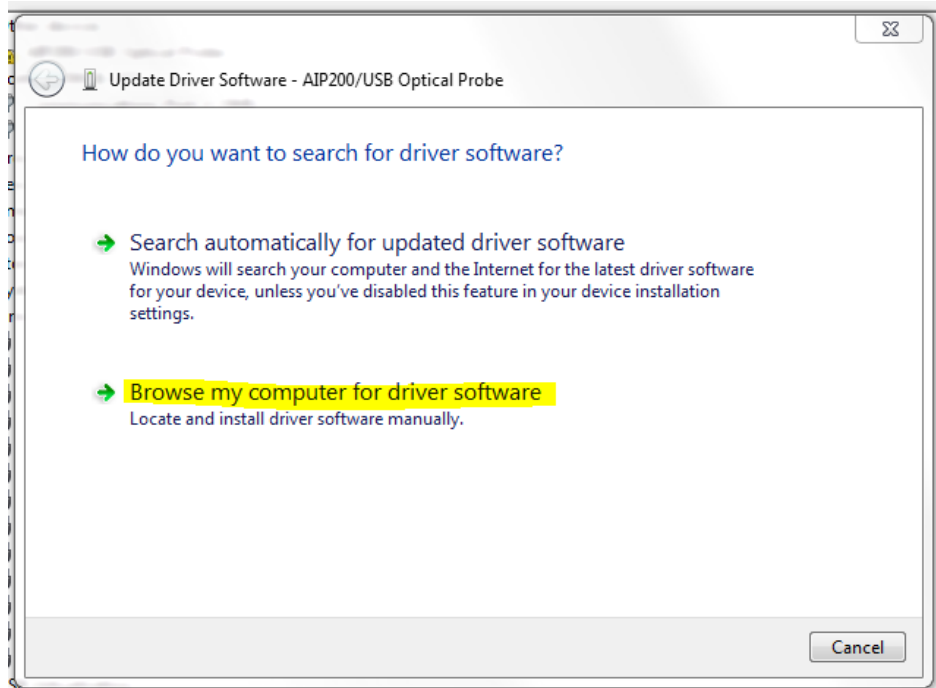


Figure 9: Screenshot where it is possible to guide Windows to the location of the new driver

- Click “Browse” in the next window and navigate the popup box to the folder containing the new driver. After selecting the folder location, which could vary across computers, click OK. Then, click “Next.”

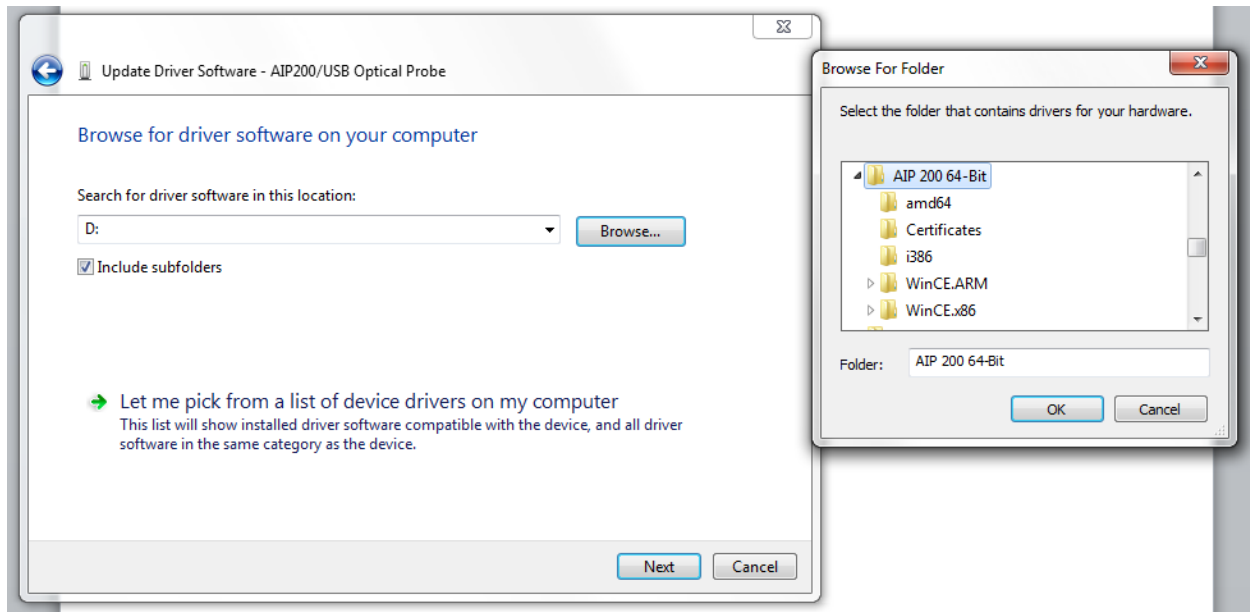


Figure 10: Screenshot of the window browsing for the new driver’s folder

- Confirm that you trust this software and wish to allow its installation by clicking “Install.”

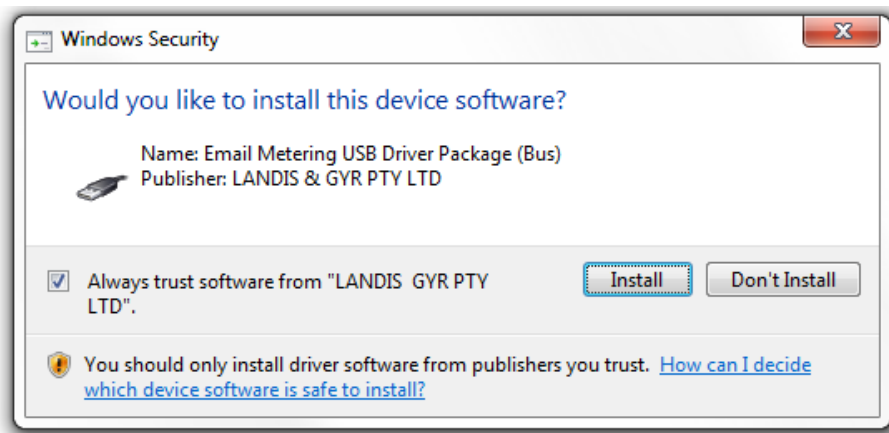
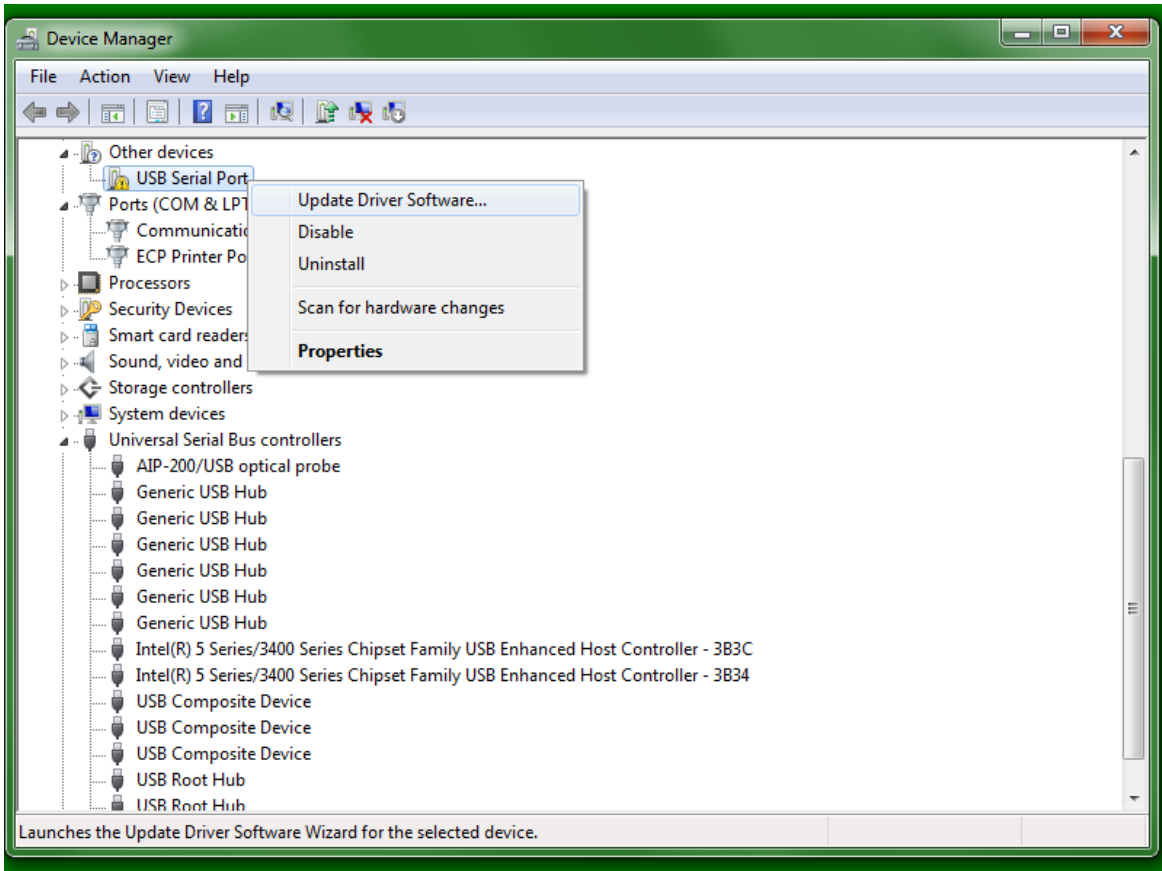


Figure 11: Screenshot of security and installation approval window

8. Right-click on the non-operational AIP-200 Com Port and select “Update Driver Software.” Then, repeat steps 5-7.



**Figure 12: Screenshot of the unrecognized Com Port where the driver can be added**



9. Confirm that the AIP-200 driver was installed from the final screen of the installation wizard. Run 1132Com and connect to either a FocusAX or S4e meter using the Com Port number indicated in the Device Manager.

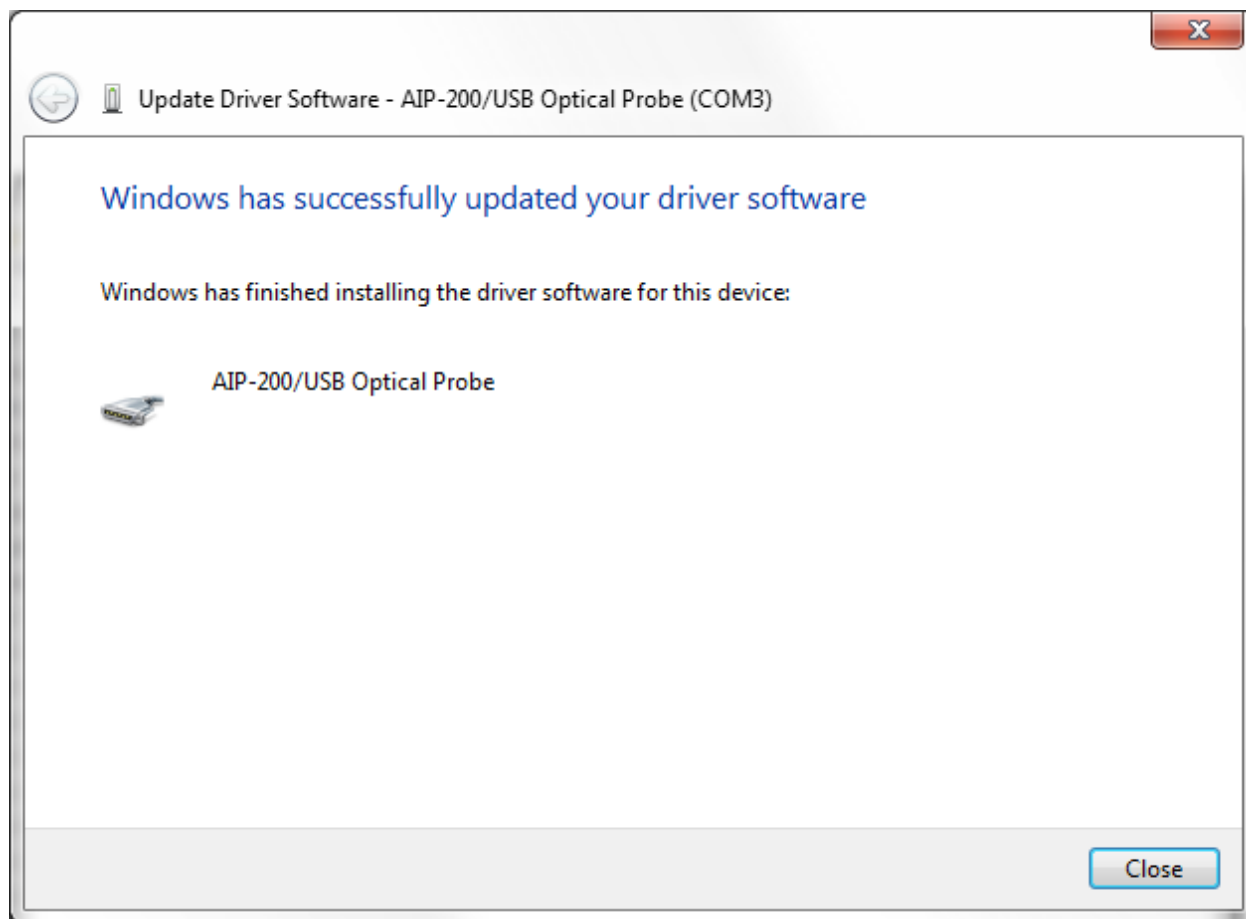


Figure 13: Screenshot of driver installation success window