



Gridstream RadioShop

Landis+Gyr+
manage energy better

Configuring and Analyzing for Optimal Radio Performance

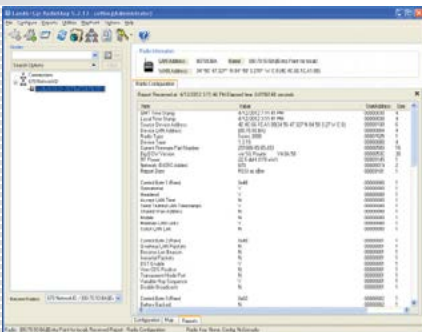
Overview

The key to a reliable grid is streamlined data transmission. The Gridstream® RadioShop is designed to perform initial radio configuration, status-check of installed radios and detailed reports of your network for peak radio performance.

FEATURES & BENEFITS:

Why Landis+Gyr makes a difference.

- Set operating characteristics of radios on the network
- Configure radios for special attributes (e.g. set as a router)
- Send programming commands (Device Control Word – DCW)
- Check status of installed radios via reports
- Encrypt Gridstream radios to ensure secure data transmission



Product Specifications: Gridstream RadioShop

Requirements

Computer	Windows XP Service Pack 2
	600-MHz Pentium processor (1 GHz is recommended)
	1 GB RAM
	500 MB of available hard disk space
	Microsoft .NET Framework 4.0
Hardware	GridStream Radio (Integrated Wangate Radio – IWR)
	Antenna
	USB to Serial Data Cable
Software	RadioShop software
	SQL Server 2008 Express (comes with RadioShop)
	SQL Server 2008 Server (comes with RadioShop)
	IP Address if connecting through a Collector
	Internet Explorer 7.0 or above
	Command Center server for authentication

Function

Configure: Set Up Radio Components	Radio	
	Domain	
	WAN Address	
	Transparent port	
	Send DCW	
	Clear DCWs	
	Firmware upgrades	
	Special Commands (include battery test, LAN node processing, WAN node processing, tracers, timestamps, and test packets)	
Reports: Request Data of a Selected Radio	Available in .csv format	
	May be viewed online or downloaded for storage and later viewing	
Utility: Update/Change Network Components	Standard reports available within RadioShop software include: <ul style="list-style-type: none"> ■ Configuration (Radio, LAN, Flash, Transparent Port) ■ Activity (Radio Status, Active DCWs, Packet Accounting, Status and Control, Boot Time, Transparent Port) ■ Connectivity and Routing (Wan Nodes, LAN Nodes, Domain, Scan List, WAN Raw List, LAN Raw List) ■ Memory (Battery Test Report, Control, Flash Download Progress, Spectrum Analyzer) ■ Special Network (SN) Reports (LAN, WAN, Scanner, Packets, Configuration, Resident DCW) ■ Security Status 	
	Refresh	
	Network (Add Network/Sub Network)	
	Radio (Select Via, Delete Current Radio, Add Device to Radio, Discover Neighbors)	
	Device	
	Options: Tailor RadioShop Settings to Fit Network Requirements	Communications
		Firmware Download
Database		
Quick Messages		
Network Discovery		
	Radio Discovery	
	LAN Source	

Phone: **678.258.1500**

FAX: **678.258.1550**

landisgyr.com

11.22.13