



Gridstream Endpoint Testing Manager



Testing and Reporting to Verify System Health

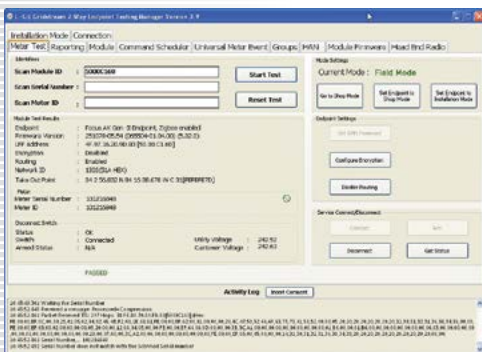
Overview

Grid reliability begins with healthy endpoints. The Gridstream® two-way Endpoint Testing Manager (ETM) enables utilities to test, modify and report on endpoints in a single channel, point-to-point environment. The result: Less fieldwork, more accurate data and increased efficiency for your utility.

FEATURES & BENEFITS:

Why Landis+Gyr makes a difference.

- Meter serial number verification
- Meter reset to manufacturer default
- View, load or remove Device Control Word (DCW) from an endpoint module
- Download firmware to endpoint module, meter and ZigBee® module
- Ensures secure operation via sending authentication to Command Center prior to tool access
- Verify HAN circuit operation



Product Specifications: **Gridstream Endpoint Testing Manager**

Requirements

Computer	600 MHz Pentium processor (1GHz is recommended)
	512 MB RAM
	500 MB of available hard disk space
	Windows XP – Service Pack 2
	Microsoft .NET Framework 4.0
Hardware	Gridstream Radio (Integrated Wangate Radio – IWR)
	Antenna
	VAC Power Adapter Cube
	USB to Serial Data Cable
	Barcode Scanner (optional)
Software	Meter Socket
	Two-Way Endpoint Testing Manager
	IP Address if connecting through a Collector
	Command Center server for authentication

Testing and Reporting

Tests Result Displays	Module ID
	Meter serial number and ID
	WAN address
	Meter type
	Routing status
	Network ID
	Current mode
	High speed enabled
	Encryption status
	Service disconnect switch: Status, utility voltage and customer voltage
	Meter kWh
	DCW
	Firmware: Module, HAN and meter
Available Reports (dependent on endpoint type)	Meter configuration
	Landis+Gyr meter configuration
	LP data
	Energy and demand/TOU
	Demand reset data/TOU
	Meter History Log Data
	Latest snap read
	Vector data
	Meter event log data
	Status summary
ANSI tables (standard 000-099)	
Manufacturing tables (000-319)	

Phone: **678.258.1500**

FAX: **678.258.1550**

landisgyr.com

11.22.13