

Residential PLX Solution

Full Two-Way Constant Communication for Gridstream® PLX Residential Metering

The advantages of power line carrier technology for advanced metering are fully realized in the Gridstream PLX network. The PLX residential endpoint takes full advantage of this next generation Gridstream platform to deliver a big boost in data delivery and processing power.

With the capacity and data throughput to support future smart grid applications, PLX endpoints are also easily installed as plug 'n play devices that are securely deployed through Gridstream head-end software, Command Center. The endpoints deliver 15-minute kWh or voltage intervals every 15-minutes for immediate use by the utility for smart grid applications that drive efficiency, reliability and revenue protection.

In addition to interval data, Gridstream PLX is continuously pushing full register meter reads for accurate, timely billing of energy and demand. This information is to alert the utility of abnormal consumption patterns. Outage management is improved with unsolicited alerts and restoration confirmation from each meter. Utilities are also able to improve cash flow by implementing prepay solutions and managing disconnects and reconnects remotely.

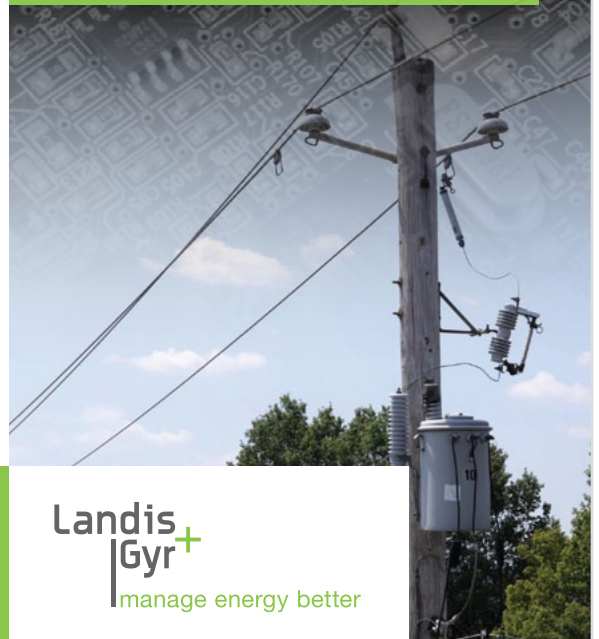
Gridstream PLX delivers updated metrology reads several times each day and diagnostics such as IEEE reliability indices and voltage sags and swells for more accurate reporting. The 15-minute interval consumption reads can also be used for engaging consumers in energy management through energy portals and consumer energy management applications.



FOCUS AL FOCUS AX/AX-SD

Key Benefits:

- 15-minute intervals of kWh or voltage continuously from every endpoint
- 45 days of storage of interval data at the endpoint
- Daily minimum, maximum and average voltage reads with time of occurrence by phase
- Remote control of four time-of-use rates within multiple schedules and holiday rates
- Automatic and immediate notification of meter tamper
- Remote reflashing capability to avoid obsolescence of module firmware
- Remote disconnect/connect with FOCUS AX-SD



Landis
Gyr+
manage energy better

Specifications

Part Number	FOCUS AL – 26-7100	
	FOCUS AX/AX-SD – 26-7200	
Operating Temperature	-40° to +85°C (under Meter Cover)	
Operating Voltage	85–264 VAC	
Setup Method	Laptop, handheld PC or remote	
Compatibility	Form	Voltage
	1S	CL100, 120v
	2S	CL200, 240v
	2SE	CL320, 240v
	3S	CL20, 120/240v
	4S	CL20, 240v
	12S/25S	CL200, 120v



FOCUS AL



FOCUS AX-SD

Standards Compliance

ANSI C12.1-2008	Code for Electricity Metering
ANSI/IPC-A-610	Acceptability of Electronic Assemblies
FCC CFR Title 47 (Part 15, subpart B)	Radiated and Conducted Emissions
IEC 61000-4-2	Electrostatic Discharge Immunity
IEC 61000-4-3	Radiated RF Electromagnetic Field Immunity
IEC 61000-4-4	Electrical Fast Transient/Burst Immunity
IEC 61000-4-5, IEEE C62.41.2-2002, Category B	Surge Immunity (Combination Wave)
IEC 61000-4-8	Power Frequency Magnetic Field Immunity
IEC 61000-4-9	Pulse Magnetic Field Immunity
IEC 61000-4-11	Voltage Dips and Interrupts Immunity
IEC 61000-4-12, IEEE C62.41.2-2002, Category B	Surge Immunity (100 kHz Ring Wave)
IEC 61000-4-18, IEEE C37.90.1-2002	Surge Immunity (1 MHz Oscillatory)
IEC 60068-2-6: 1987	Mechanical Vibration
IEC 60068-2-27: 1987	Mechanical Shock
10 kV Surge Immunity (Combination Wave)	
Accelerated Life Test	85°C with 85% Relative Humidity for 1100 hours

6436 County Road 11
 Pequot Lakes, MN 56472 U.S.A.
 Phone: **800.828.4055** • FAX: **218.562.4878**
 www.landisgyr.com

