
Optical Port Settings for ZxQ Meters

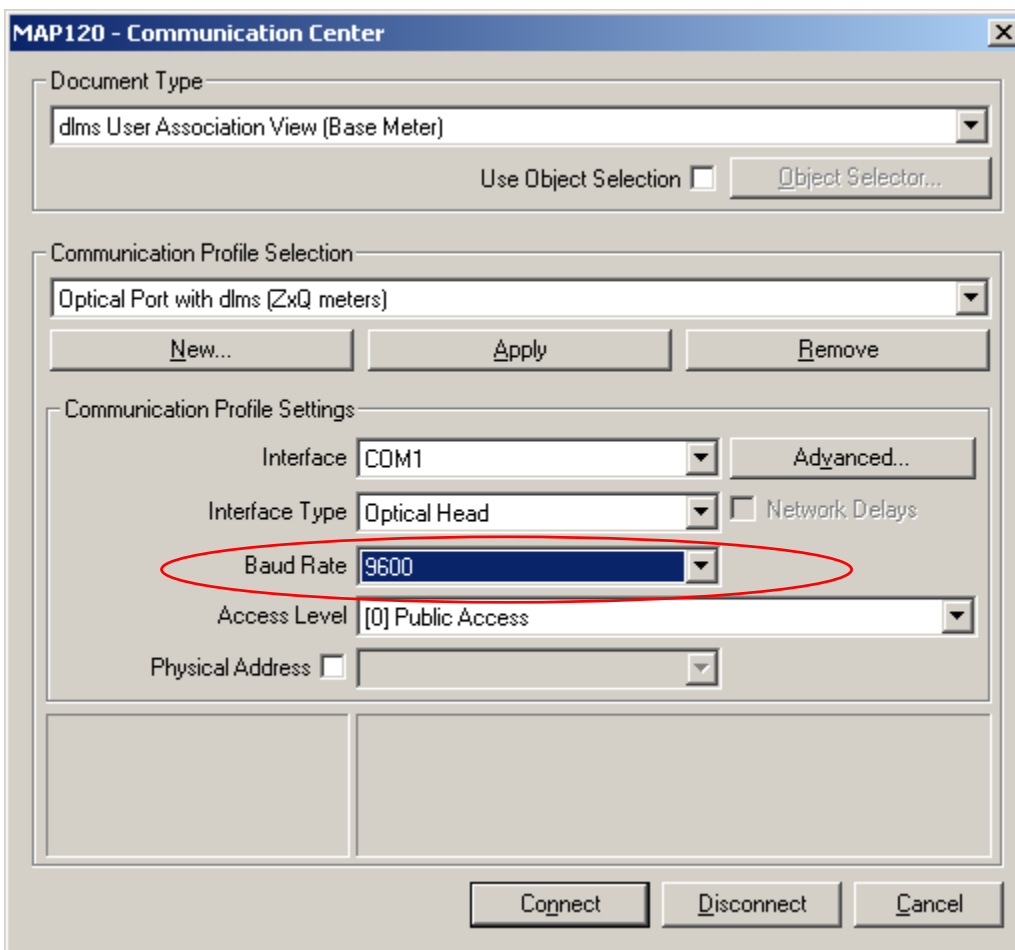
ZxQ meter series

Description

All ZxQ meters are pure dlms meters. Therefore the standard communication settings of MAP120 for the optical port don't fit. Usually the start protocol is IEC62056-21 at 300 bps. ZxQ meters use the dlms protocol at 9600 bps.

Solution

It is recommended to define an own communication profile to handle the optical port of ZxQ meters. The following settings are important:



Baud rate must be set to 9600.

In the advanced settings the start protocol must be set to HDLC (dlms):

