

KleanLine® Dry Gas Filters

Technical Bulletin



The Elster KleanLine® Dry Gas Filters are designed to remove particles from dry gases without substantial pressure loss and are available in threaded or flanged connections.

General Information

All natural gas pipelines have some degree of contamination present. Dust, dirt, rust, pipe scale, welding slag and valve grease are potential sources of problems for regulators and meters.

Pilot Filters

The Pilot Filter was designed to protect the pilots of pilot loaded regulators. However, their steel construction allows them to be used in any application up to 1,000 PSIG and come with a standard 5 micron element. Pilot filters are available in either 1/4" x 90° or 1/4" x 180° connections.

Inline Threaded Filters

Ideal for residential and commercial applications, KleanLine Threaded Filters will protect regulator and meter sets from the debris found in distribution piping systems. This protection can add years to meter life as well as protect the regulator from debris that can foul orifices and impair lockup. The cast iron design of the Threaded Filter allows use in applications up to 160 PSIG and is equipped with a filter element which will remove particles as small as 5 microns. They are available in 3/4", 1", 1-1/2" or 2" NPT sizes.

2" Model KLM Filters

Elster American Meter's 2" Model KLM Miniature Filter was designed to be used in low to mid-range flow applications where a strainer is too coarse and your budget does not allow for a standard full-filter housing. The 2" KLM KleanLine Filter is available with female or male-threaded, ANSI 150 Flanged or Socket-Weld connections. This filter is an excellent choice where limited space is provided for the complete meter/regulation set.

Model KL Filters

The Model KL Filter all steel construction was designed to meet the demands of large volume industrial meter sets or distribution regulator stations where the pipeline MAOP can range from 175 psi

to 1,480 psi. The standard filter element can remove particles to 10 microns with either 5 or 25 micron elements available as options. Flanged filters range in sizes from 2" through 12" with raised face flanges.

Maintenance

Upright Model KL filters come standard with upstream and downstream pressure taps and an optional differential pressure gauge (Figure 1) for determining the pressure drop across the filter. Upon installing the filter, a start-up differential pressure should be recorded for comparison during later station visits. The differential pressure needed to collapse a filter element is 25 PSID. Good engineering practice suggests that the element be changed at half its collapsible differential.

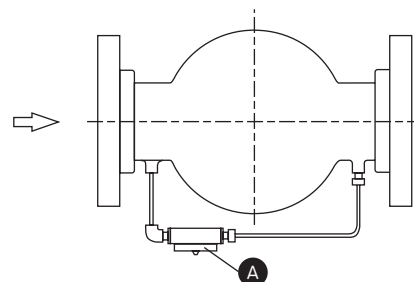
Filter Closures

Model	Pressure			
	175 PSIG	275 PSIG	740 PSIG	1480 PSIG
KLM-2	SH	-	-	-
KL-2	SH	SH	BF (TKO)	BF (TKO)
KL-3	SH	SH	BF (TKO)	BF (TKO)
KL-4	SH	SH	BF (TKO)	BF (TKO)
KL-6	SH	SH	BF (TKO)	BFD (TKO)
KL-8	BFD	BFD	BFD	BFD
KL-10	BFD	BFD	BFHD	BFHD
KL-12	BFD	BFD	BFHD	BFHD

- SH = Quick Opening Swing Bolt
- BF = Blind Flange
- BFD = Blind Flange with Manual Lifting Davit Assist
- BFHD = Blind Flange with Hydraulically Assisted Davit
- (TKO) = Optional Threaded Knock-Off Closure

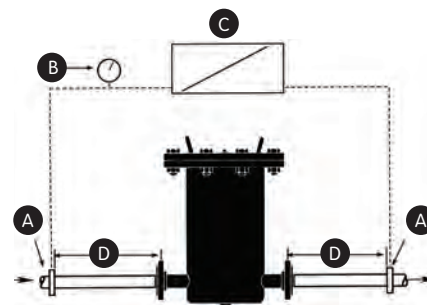
Test Installation for Capacity Tables

The capacity tables on pages 7 through 15 for KleanLine Filters are based on .60 specific gravity and are shown in SCFH and SCMh using a 10 micron element. The differential pressure listed in the capacity tables is taken from line taps as shown in the diagram to include the pressure drop created by the filter body and represent start-up conditions using a clean filter element.



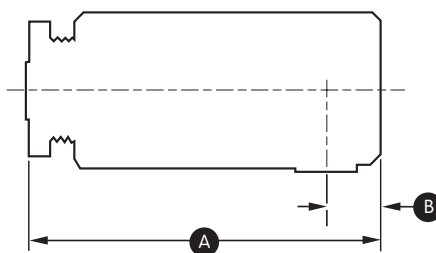
A Optional 0-30 PSID Differential Gauge

Figure 1



- A Upstream Tap
- B Pressure Gauge
- C Differential Gauge
- D 5 Pipe Diameters

Pilot Filter - Capacity Performance



A 3-13/32" Min **B** 1/2" for 90° Connection

Dimensions and Weights

Pipe Size	Oz.
1/4" NPT	15

Elements

Size	Size of Element	Number Required	Part No. 5 Micron
1/4" NPT	11/16" x 1-3/4"	1	73408G001

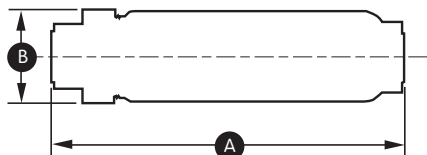
1/4" NPT (F) - Capacity (SCFH)

Differential Pressure	Inlet Pressure (PSIG)															
	0.25	1	5	10	20	30	50	75	100	125	150	200	300	500	750	1000
1" W.C.	75	81	90	101	120	136	164	193	218	241	261	298	361	462	563	649
2" W.C.	106	109	120	134	159	180	217	255	288	318	346	395	478	611	745	858
5" W.C.	—	171	192	215	254	289	347	409	463	510	554	633	766	980	1190	1290
10" W.C.	—	241	271	303	360	409	493	578	654	722	784	895	1080	1390	1690	1950
20" W.C.	—	—	379	426	507	577	695	820	925	1020	1110	1270	1530	1960	2390	2750
1 PSID	—	—	443	498	594	676	817	964	1090	1200	1310	1500	1810	2320	2830	3260
3 PSID	—	—	—	—	998	1150	1390	1650	1870	2070	2250	2580	3130	4010	4890	5460
5 PSID	—	—	—	—	—	—	1770	2110	2400	2660	2890	3310	4030	5160	6310	7270

1/4" NPT (F) - Capacity (SCMH)

Differential Pressure	Inlet Pressure (barg)																		
	0.5	1	2	3	4	5	10	15	20	25	30	40	50	60	70	80	90	100	
1 barg	1	1	2	2	2	3	4	5	6	6	7	8	9	10	11	11	12	13	
2 barg	2	2	3	3	4	4	6	7	8	9	10	11	13	14	15	16	17	18	
5 mbar	3	4	5	5	6	7	9	11	13	15	16	18	21	23	24	26	28	29	
10 mbar	5	5	7	8	9	10	13	16	19	21	23	26	29	32	35	37	40	42	
20 mbar	7	8	10	11	13	14	19	23	27	30	33	38	42	46	50	53	56	59	
50 mbar	11	13	16	18	20	22	31	37	42	47	52	60	67	73	79	84	89	94	
100 mbar	15	18	22	26	29	32	43	52	60	67	73	84	94	104	112	120	127	134	
150 mbar	18	22	27	31	35	39	53	64	74	82	90	104	116	127	137	146	155	164	
250 mbar	23	27	34	40	45	50	68	83	95	107	117	134	150	164	177	189	200	211	
350 mbar	26	31	40	47	53	59	81	98	113	126	138	159	177	194	209	223	237	250	

Inline Threaded Filter - Capacity Performance



Technical Data

Size	Lbs.	A	B	Size of Element	No. Required	Part No. 5 Micron	Seal Washers
3/4"	2	6"	1-15/16"	1-1/4" x 3-5/8"	1	73355G001	70019P090
1"	4	9"	2-15/16"	1-1/4" x 6-3/16"	1	73355G002	70019P015
1-1/2"	18-1/2	15"	3-7/8"	2-1/2" x 11-5/32"	1	73355G004	13147P005
2"	19	15"	3-7/8"	2-1/2" x 11-5/32"	1	73355G004	13147P005

0.25 PSIG Inlet Pressure - Capacity (SCFH)

Differential Pressure	3/4" NPT	1" NPT	1-1/2" NPT	2" NPT
1" W.C.	462	543	2600	3350
2" W.C.	652	766	3670	4230

1 PSIG Inlet Pressure - Capacity (SCFH)

Differential Pressure	3/4" NPT	1" NPT	1-1/2" NPT	2" NPT
1" W.C.	543	640	3040	3910
2" W.C.	668	785	3760	4850
5" W.C.	1050	1240	5920	7640
10" W.C.	1480	1740	8340	10,800

5 PSIG Inlet Pressure - Capacity (SCFH)

Differential Pressure	3/4" NPT	1" NPT	1-1/2" NPT	2" NPT
1" W.C.	605	713	3390	4370
2" W.C.	792	933	4430	5710
5" W.C.	1180	1390	6640	8560
10" W.C.	1670	1960	9360	12,100
20" W.C.	2330	2740	13,100	16,900
1 PSID	2730	3200	15,300	19,800

10 PSIG Inlet Pressure - Capacity (SCFH)

Differential Pressure	3/4" NPT	1" NPT	1-1/2" NPT	2" NPT
1" W.C.	675	795	3770	4870
2" W.C.	883	1040	4940	6370
5" W.C.	1320	1560	7840	9590
10" W.C.	1870	2190	10,500	13,500
20" W.C.	2620	3080	14,700	19,000
1 PSID	3070	3600	17,300	22,200

20 PSIG Inlet Pressure - Capacity (SCFH)

Differential Pressure	3/4" NPT	1" NPT	1-1/2" NPT	2" NPT
1" W.C.	794	936	4440	5730
2" W.C.	1040	1230	5810	7500
5" W.C.	1640	1930	9150	11,800
10" W.C.	2220	2600	12,500	16,100
20" W.C.	3120	3670	17,600	22,600
1 PSID	3660	4300	20,600	26,500
3 PSID	6140	7210	34,600	44,500

30 PSIG Inlet Pressure - Capacity (SCFH)

Differential Pressure	3/4" NPT	1" NPT	1-1/2" NPT	2" NPT
1" W.C.	897	1060	5020	6470
2" W.C.	1170	1380	6560	8460
5" W.C.	1850	2180	10,300	13,300
10" W.C.	2520	2960	14,200	18,300
20" W.C.	3550	4170	20,000	25,700
1 PSID	4160	4890	23,400	30,200
3 PSID	7040	8280	39,600	51,100

Capacities based upon natural gas with a specific gravity of 0.6

50 PSIG Inlet Pressure - Capacity (SCFH)

Differential Pressure	3/4" NPT	1" NPT	1-1/2" NPT	2" NPT
1" W.C.	1070	1260	5990	7720
2" W.C.	1400	1650	7840	10,100
5" W.C.	2200	2600	12,300	15,900
10" W.C.	3040	3570	17,100	22,000
20" W.C.	4280	5030	24,100	31,000
1 PSID	5030	5900	28,300	36,400
3 PSID	8570	10,100	48,200	62,100
5 PSID	10,900	12,800	61,200	78,900

75 PSIG Inlet Pressure - Capacity (SCFH)

Differential Pressure	3/4" NPT	1" NPT	1-1/2" NPT	2" NPT
1" W.C.	1250	1480	7010	9040
2" W.C.	1640	1930	9170	11,800
5" W.C.	2580	3040	14,400	18,600
10" W.C.	3600	4240	20,100	25,900
20" W.C.	5050	5930	28,400	36,600
1 PSID	5930	6970	33,400	43,000
3 PSID	10,200	11,900	57,100	73,600
5 PSID	13,000	15,200	72,900	93,900

100 PSIG Inlet Pressure - Capacity (SCFH)

Differential Pressure	3/4" NPT	1" NPT	1-1/2" NPT	2" NPT
1" W.C.	1410	1660	7890	10,200
2" W.C.	1840	2170	10,300	13,300
5" W.C.	2900	3420	16,200	20,900
10" W.C.	4050	4770	22,600	29,200
20" W.C.	5650	6650	31,600	40,700
1 PSID	6710	7890	37,800	48,700
3 PSID	11,500	13,500	64,800	83,600
5 PSID	14,800	17,300	82,900	107,000

125 PSIG Inlet Pressure - Capacity (SCFH)

Differential Pressure	3/4" NPT	1" NPT	1-1/2" NPT	2" NPT
1" W.C.	1550	1830	8670	11,200
2" W.C.	2030	2390	11,300	14,600
5" W.C.	3190	3760	17,800	23,000
10" W.C.	4450	5240	24,900	32,100
20" W.C.	6210	7320	34,700	44,800
1 PSID	7420	8710	41,700	53,800
3 PSID	12,800	15,000	71,700	92,400
5 PSID	16,300	19,200	91,900	119,000

150 PSIG Inlet Pressure - Capacity (SCFH)

Differential Pressure	3/4" NPT	1" NPT	1-1/2" NPT	2" NPT
1" W.C.	1680	1980	9380	12,100
2" W.C.	2200	2590	12,300	15,800
5" W.C.	3450	4070	19,300	25,000
10" W.C.	4820	5680	26,900	34,700
20" W.C.	6720	7920	37,600	48,400
1 PSID	8060	9470	45,300	58,400
3 PSID	13,900	16,300	78,000	101,000
5 PSID	17,800	20,900	100,000	129,000

160 PSIG Inlet Pressure - Capacity (SCFH)

Differential Pressure	3/4" NPT	1" NPT	1-1/2" NPT	2" NPT
1" W.C.	1730	2030	9650	12,400
2" W.C.	2260	2660	12,600	16,300
5" W.C.	3550	4190	19,900	25,600
10" W.C.	4960	5840	27,700	35,700
20" W.C.	6910	8140	38,700	49,800
1 PSID	8200	9900	46,000	60,000
3 PSID	14,500	17,000	81,000	103,000
5 PSID	18,300	21,500	102,000	132,000

0.5 barg Inlet Pressure - Capacity (SCMH)

Differential Pressure	3/4" NPT	1" NPT	1-1/2" NPT	2" NPT
1 mbar	9	11	56	72
2 mbar	14	16	79	103
5 mbar	22	26	126	162
10 mbar	31	37	178	229
50 mbar	44	52	250	323
100 mbar	69	81	392	505
150 mbar	96	114	545	702
250 mbar	116	137	655	844
250 mbar	145	170	814	1050
350 mbar	164	193	923	1190

1 bar = 100 kPa
1 mbar = 0.1 kPa

Capacities based upon natural gas with a specific gravity of 0.6

1 barg Inlet Pressure - Capacity (SCMH)

Differential Pressure	3/4" NPT	1" NPT	1-1/2" NPT	2" NPT
1 mbar	11	13	65	83
2 mbar	16	19	91	119
5 mbar	25	30	145	187
10 mbar	36	42	205	285
50 mbar	51	60	290	373
100 mbar	80	94	454	586
150 mbar	113	133	634	818
250 mbar	136	160	767	988
250 mbar	171	201	963	1240
350 mbar	197	231	1110	1430

1 bar = 100 kPa
1 mbar = 0.1 kPa

Inline Threaded Filter - Capacity Performance

2 barg Inlet Pressure - Capacity (SCMH)

Differential Pressure	3/4" NPT	1" NPT	1-1/2" NPT	2" NPT
1 mbar	14	16	79	103
2 mbar	19	23	113	145
5 mbar	31	37	178	230
10 mbar	44	52	252	324
50 mbar	63	74	355	458
100 mbar	99	117	559	720
150 mbar	139	164	784	1010
250 mbar	169	199	952	1230
250 mbar	215	252	1210	1560
350 mbar	249	293	1400	1810

1 bar = 100 kPa
1 mbar = 0.1 kPa

3 barg Inlet Pressure - Capacity (SCMH)

Differential Pressure	3/4" NPT	1" NPT	1-1/2" NPT	2" NPT
1 mbar	16	19	91	119
2 mbar	23	27	130	168
5 mbar	36	42	206	265
10 mbar	51	60	291	375
50 mbar	72	85	411	529
100 mbar	115	135	647	834
150 mbar	162	190	909	1170
250 mbar	197	231	1110	1430
250 mbar	250	294	1410	1820
350 mbar	292	344	1640	2120

1 bar = 100 kPa
1 mbar = 0.1 kPa

4 barg Inlet Pressure - Capacity (SCMH)

Differential Pressure	3/4" NPT	1" NPT	1-1/2" NPT	2" NPT
1 mbar	18	21	103	133
2 mbar	25	30	145	188
5 mbar	40	47	230	296
10 mbar	57	67	325	419
50 mbar	81	95	459	592
100 mbar	129	151	724	933
150 mbar	181	213	1020	1310
250 mbar	221	259	1240	1600
250 mbar	282	331	1590	2040
350 mbar	330	388	1860	2390

1 bar = 100 kPa
1 mbar = 0.1 kPa

5 barg Inlet Pressure - Capacity (SCMH)

Differential Pressure	3/4" NPT	1" NPT	1-1/2" NPT	2" NPT
1 mbar	19	23	113	145
2 mbar	28	33	159	205
5 mbar	44	52	252	325
10 mbar	63	74	356	459
50 mbar	89	105	503	649
100 mbar	141	166	794	1020
150 mbar	199	233	1120	1440
250 mbar	242	285	1360	1760
250 mbar	310	364	1740	2250
350 mbar	364	427	2050	2640

1 bar = 100 kPa
1 mbar = 0.1 kPa

10 barg Inlet Pressure - Capacity (SCMH)

Differential Pressure	3/4" NPT	1" NPT	1-1/2" NPT	2" NPT
1 mbar	27	31	153	197
2 mbar	38	45	216	278
5 mbar	60	71	341	440
10 mbar	85	101	482	622
50 mbar	121	142	682	879
100 mbar	191	225	1080	1390
150 mbar	270	317	1520	1960
250 mbar	330	388	1860	2390
250 mbar	424	498	2390	3070
350 mbar	499	587	2810	3620

1 bar = 100 kPa
1 mbar = 0.1 kPa

2" Model KLM Filter - Capacity Performance

2" Model KLM Filter Capacity (SCFH)

Differential Pressure (Line Taps)	Inlet Pressure (PSIG)							
	0.25	5	10	25	50	100	150	175
0.5" W.C.	2750	3200	3360	4400	5600	7600	9200	11,700
1" W.C.	3800	4400	4600	6250	8000	10,600	12,700	16,000
5" W.C.	9200	10,700	12,000	15,300	19,300	25,600	30,700	32,900
10" W.C.	—	15,200	17,000	21,500	27,300	36,400	43,300	46,800
20" W.C.	—	21,000	23,700	30,200	38,500	51,300	61,700	66,000
1 PSID	—	—	27,900	35,600	45,400	60,300	73,000	77,400
2 PSID	—	—	—	49,900	63,800	85,000	104,000	110,000
3 PSID	—	—	—	—	78,000	105,000	129,000	133,800
4 PSID	—	—	—	—	—	122,000	148,000	154,300
5 PSID	—	—	—	—	—	135,000	165,000	175,000

2" Model KLM Filter Capacity (SCMH)

Differential Pressure (Line Taps)	Inlet Pressure (barg)							
	0.5	1	2	3	4	5	10	12
1 mbar	92	103	129	148	166	182	253	328
2 mbar	126	143	183	211	236	257	350	448
5 mbar	316	364	446	511	569	620	845	921
10 mbar	448	514	628	722	805	879	1193	1310
20 mbar	624	718	883	1018	1135	1239	1698	1848
50 mbar	—	846	1041	1200	1338	1459	2008	2167
100 mbar	—	—	1459	1685	1881	2054	2859	3080
150 mbar	—	—	—	—	2305	2524	3545	3746
250 mbar	—	—	—	—	—	—	4071	4320
350 mbar	—	—	—	—	—	—	4536	4900

Capacities based upon natural gas with a specific gravity of 0.6



2" Flanged Model KLM



2" Threaded (male) Model KLM



2" Threaded (female) or 2" Socket Weld Model KLM

Model KL Filter - Capacity Performance

0.25 and 2 PSIG Inlet Pressure Model KL Filter Capacities (MSCFH)

Differential Pressure (Line Taps)	Filter Size (0.25 PSIG Inlet Pressure)							Filter Size (2 PSIG Inlet Pressure)						
	2"	3"	4"	6"	8"	10"	12"	2"	3"	4"	6"	8"	10"	12"
0.5" W.C.	4	7	12	27	57	84	116	4	8	12	29	60	95	130
1" W.C.	5	10	17	39	68	125	170	6	11	18	41	71	135	188
5" W.C.	12	23	37	86	78	—	—	13	24	39	91	120	270	378
10" W.C.	—	—	—	—	—	—	—	18	34	55	128	210	380	532
20" W.C.	—	—	—	—	—	—	—	25	48	77	179	—	540	—
1 PSID	—	—	—	—	—	—	—	29	56	90	209	—	—	—
2 PSID	—	—	—	—	—	—	—	—	—	—	—	—	—	—
3 PSID	—	—	—	—	—	—	—	—	—	—	—	—	—	—
4 PSID	—	—	—	—	—	—	—	—	—	—	—	—	—	—
5 PSID	—	—	—	—	—	—	—	—	—	—	—	—	—	—

5 and 10 PSIG Inlet Pressure Model KL Filter Capacities (MSCFH)

Differential Pressure (Line Taps)	Filter Size (5 PSIG Inlet Pressure)							Filter Size (10 PSIG Inlet Pressure)						
	2"	3"	4"	6"	8"	10"	12"	2"	3"	4"	6"	8"	10"	12"
0.5" W.C.	4	8	13	31	64	105	147	5	9	15	35	75	130	182
1" W.C.	6	12	19	44	76	145	203	7	13	21	50	108	184	257
5" W.C.	14	26	42	99	160	350	490	15	30	48	111	245	410	574
10" W.C.	19	37	60	140	250	505	707	21	42	67	156	346	580	812
20" W.C.	27	52	84	195	360	725	1000	30	58	94	220	490	840	1170
1 PSID	31	61	98	228	490	910	—	35	68	110	257	561	957	1350
2 PSID	43	83	135	314	—	—	—	49	95	152	356	802	1360	1800
3 PSID	51	99	160	374	—	—	—	58	113	182	426	1000	1610	—
4 PSID	57	111	179	419	—	—	—	66	128	206	480	—	—	—
5 PSID	—	—	—	—	—	—	—	72	139	224	524	—	—	—

20 and 30 PSIG Inlet Pressure Model KL Filter Capacities (MSCFH)

Differential Pressure (Line Taps)	Filter Size (20 PSIG Inlet Pressure)							Filter Size (30 PSIG Inlet Pressure)						
	2"	3"	4"	6"	8"	10"	12"	2"	3"	4"	6"	8"	10"	12"
0.5" W.C.	6	11	18	42	86	150	210	7	13	20	47	103	164	230
1" W.C.	8	16	25	59	120	215	301	9	18	29	67	144	248	347
5" W.C.	18	35	56	132	280	480	672	21	40	64	150	331	570	798
10" W.C.	26	49	80	186	410	680	952	29	56	90	211	480	830	1160
20" W.C.	36	69	112	261	570	970	1370	41	79	127	297	680	1200	1680
1 PSID	42	81	131	306	705	1052	1850	48	93	149	349	841	1360	2160
2 PSID	59	113	183	427	930	1600	2200	67	130	209	488	1140	1880	2630
3 PSID	71	137	221	515	1160	2000	2800	81	157	253	590	1400	2300	3200
4 PSID	80	155	251	585	1300	2300	—	92	179	288	673	1600	2650	3700
5 PSID	88	171	276	643	—	—	—	102	198	319	744	1800	2980	4200

40 and 50 PSIG Inlet Pressure Model KL Filter Capacities (MSCFH)

Differential Pressure (Line Taps)	Filter Size (40 PSIG Inlet Pressure)							Filter Size (50 PSIG Inlet Pressure)						
	2"	3"	4"	6"	8"	10"	12"	2"	3"	4"	6"	8"	10"	12"
0.5" W.C.	7	14	22	52	112	170	238	8	15	24	57	121	178	249
1" W.C.	10	20	32	74	157	269	377	11	21	35	81	170	290	406
5" W.C.	23	44	71	166	363	620	868	25	48	77	180	393	680	952
10" W.C.	32	62	100	234	522	920	1280	35	68	109	254	560	1000	1400
20" W.C.	45	88	141	329	740	1350	1890	49	95	154	359	790	1500	2100
1 PSID	53	103	166	387	970	1580	2280	58	112	180	421	1100	1900	2400
2 PSID	74	144	232	542	1230	2000	2800	81	157	253	591	1300	2450	3430
3 PSID	90	175	282	657	1520	2500	3500	99	191	308	718	1620	2700	3780
4 PSID	103	200	322	752	1750	2800	3920	113	218	352	822	1871	3100	4340
5 PSID	114	221	356	832	1920	3250	4550	125	242	391	912	2090	3500	4900

Capacities based upon natural gas with a specific gravity of 0.6

Model KL Filter - Capacity Performance

75 and 100 PSIG Inlet Pressure Model KL Filter Capacities (MSCFH)

Differential Pressure (Line Taps)	Filter Size (75 PSIG Inlet Pressure)							Filter Size (100 PSIG Inlet Pressure)						
	2"	3"	4"	6"	8"	10"	12"	2"	3"	4"	6"	8"	10"	12"
0.5" W.C.	9	18	29	67	140	220	308	10	20	33	76	165	260	364
1" W.C.	13	25	41	95	200	340	476	15	29	46	107	230	380	532
5" W.C.	29	56	91	212	460	790	1106	33	64	103	240	520	900	1260
10" W.C.	41	80	128	300	658	1150	1610	47	90	145	339	740	1300	1820
20" W.C.	58	112	181	423	945	1700	2380	66	127	205	479	1120	1900	2660
1 PSID	68	132	213	497	1300	2250	3200	77	149	241	563	1600	2500	4000
2 PSID	96	186	299	699	1560	2800	3920	109	210	339	792	1770	3100	4340
3 PSID	117	226	365	851	1908	3200	4480	133	257	414	966	2150	3800	5300
4 PSID	134	260	419	977	2200	3800	5320	152	295	476	1110	2490	4500	6300
5 PSID	149	289	465	1086	2450	4400	6160	170	328	529	1236	2780	5300	7400

125 and 150 PSIG Inlet Pressure Model KL Filter Capacities (MSCFH)

Differential Pressure (Line Taps)	Filter Size (125 PSIG Inlet Pressure)							Filter Size (150 PSIG Inlet Pressure)						
	2"	3"	4"	6"	8"	10"	12"	2"	3"	4"	6"	8"	10"	12"
0.5" W.C.	12	22	36	84	182	300	420	12	24	39	91	200	350	490
1" W.C.	16	31	51	118	260	420	588	18	34	55	129	280	452	633
5" W.C.	36	70	113	265	575	980	1370	39	76	123	288	632	1050	1480
10" W.C.	51	99	160	374	820	1450	2030	56	108	174	406	890	1600	2240
20" W.C.	73	140	226	529	1190	2100	2900	79	153	246	574	1260	2200	3100
1 PSID	85	165	266	621	1750	2800	4350	93	179	289	675	1900	3000	4700
2 PSID	120	233	375	876	1950	3350	4700	131	253	408	952	2115	3600	5040
3 PSID	147	284	458	1069	2370	4300	6020	160	309	498	1162	2600	4800	6700
4 PSID	169	327	527	1229	2750	4900	6860	184	355	573	1338	2990	5200	7280
5 PSID	188	364	587	1369	3050	5500	7700	205	396	639	1491	3300	5700	8000

200 and 250 PSIG Inlet Pressure Model KL Filter Capacities (MSCFH)

Differential Pressure (Line Taps)	Filter Size (200 PSIG Inlet Pressure)							Filter Size (250 PSIG Inlet Pressure)						
	2"	3"	4"	6"	8"	10"	12"	2"	3"	4"	6"	8"	10"	12"
0.5" W.C.	14	28	44	104	220	410	574	16	31	49	115	250	470	658
1" W.C.	20	39	63	147	321	480	672	22	43	70	163	356	540	756
5" W.C.	45	87	141	328	723	1120	1570	50	97	156	365	800	1200	1680
10" W.C.	64	123	199	464	1024	1750	2450	71	137	221	515	1120	1900	2660
20" W.C.	90	174	281	656	1449	2500	3500	100	194	312	728	1600	2700	3780
1 PSID	106	205	330	771	2100	3200	5000	118	228	367	857	2190	3400	5250
2 PSID	149	289	466	1088	2400	4200	5880	166	321	518	1209	2650	4800	6700
3 PSID	183	353	570	1330	3010	5400	7560	203	393	633	1478	3700	6100	8900
4 PSID	210	407	656	1532	3400	6100	8540	234	453	730	1704	3850	7000	9800
5 PSID	235	454	732	1709	3800	6300	8800	261	505	814	1901	4300	7800	10,900

300 and 400 PSIG Inlet Pressure Model KL Filter Capacities (MSCFH)

Differential Pressure (Line Taps)	Filter Size (300 PSIG Inlet Pressure)							Filter Size (400 PSIG Inlet Pressure)						
	2"	3"	4"	6"	8"	10"	12"	2"	3"	4"	6"	8"	10"	12"
0.5" W.C.	17	33	54	126	277	520	728	20	38	62	144	285	580	812
1" W.C.	24	47	76	178	390	600	840	28	54	87	204	450	660	924
5" W.C.	55	106	170	398	870	1350	1890	63	121	195	456	950	1490	2080
10" W.C.	77	149	241	562	1200	2050	2870	89	171	276	645	1400	2250	3150
20" W.C.	109	211	340	794	1750	2900	4060	125	242	391	912	2050	3100	4340
1 PSID	128	248	400	935	2270	3650	5500	147	285	460	1073	2330	3900	5750
2 PSID	181	351	565	1320	2990	5200	7280	208	403	649	1516	3450	5600	7800
3 PSID	222	429	691	1614	4000	6400	9340	255	493	794	1854	4640	7000	10,220
4 PSID	255	494	797	1860	4230	7600	10,600	294	568	916	2139	4800	8100	11,300
5 PSID	285	552	889	2076	4700	8500	11,900	328	634	1023	2388	5300	9100	12,700

Capacities based upon natural gas with a specific gravity of 0.6

Model KL Filter - Capacity Performance

500 and 600 PSIG Inlet Pressure Model KL Filter Capacities (MSCFH)

Differential Pressure (Line Taps)	Filter Size (500 PSIG Inlet Pressure)							Filter Size (600 PSIG Inlet Pressure)						
	2"	3"	4"	6"	8"	10"	12"	2"	3"	4"	6"	8"	10"	12"
0.5" W.C.	22	43	69	161	293	—	—	24	47	75	176	340	—	—
1" W.C.	31	60	97	277	501	730	1020	34	66	106	249	547	800	1130
5" W.C.	70	135	218	508	1120	1550	2170	76	148	238	556	1220	1600	2240
10" W.C.	99	191	308	719	1580	2380	3332	108	209	337	786	1740	2500	3500
20" W.C.	140	270	435	1016	2350	3250	4550	153	295	476	1111	2550	3400	4760
1 PSID	164	318	512	1196	2800	4200	5980	179	347	560	1307	3050	4500	6300
2 PSID	232	449	724	1690	3950	6000	8400	254	491	791	1847	4350	6500	9100
3 PSID	284	549	886	2067	5200	7600	11,100	310	601	968	2260	5600	8200	11,980
4 PSID	327	634	1022	2385	5380	8800	12,300	358	639	1117	2608	5800	9600	13,400
5 PSID	366	708	1141	2664	5900	9900	13,800	400	774	1248	2913	6400	10,800	15,100

700 and 800 PSIG Inlet Pressure Model KL Filter Capacities (MSCFH)

Differential Pressure (Line Taps)	Filter Size (700 PSIG Inlet Pressure)							Filter Size (800 PSIG Inlet Pressure)						
	2"	3"	4"	6"	8"	10"	12"	2"	3"	4"	6"	8"	10"	12"
0.5" W.C.	26	50	81	189	417	—	—	28	54	87	202	—	—	—
1" W.C.	37	71	115	268	590	—	—	39	76	123	286	635	—	—
5" W.C.	82	159	257	599	1330	1670	2340	88	170	274	640	1420	—	—
10" W.C.	116	225	363	847	1910	2650	3710	124	240	387	905	2010	3100	—
20" W.C.	164	318	513	1198	2750	3650	5100	176	340	548	1279	2900	4200	5880
1 PSID	194	374	604	1410	3280	4750	6650	207	400	645	1505	3400	5400	7560
2 PSID	274	529	853	1992	4750	6800	9520	292	565	911	2127	4900	7500	10,500
3 PSID	335	648	1044	2438	5800	8800	12,860	358	692	1115	2604	6300	9480	13,980
4 PSID	386	747	1205	2813	6240	10,100	14,100	413	798	1287	3005	6600	11,000	15,400
5 PSID	432	835	1346	3143	6900	11,400	16,000	461	892	1438	3357	7430	12,500	17,500

900 and 1000 PSIG Inlet Pressure Model KL Filter Capacities (MSCFH)

Differential Pressure (Line Taps)	Filter Size (900 PSIG Inlet Pressure)							Filter Size (1000 PSIG Inlet Pressure)						
	2"	3"	4"	6"	8"	10"	12"	2"	3"	4"	6"	8"	10"	12"
0.5" W.C.	29	57	92	214	—	—	—	31	60	97	226	—	—	—
1" W.C.	42	81	130	303	675	—	—	44	85	137	319	—	—	—
5" W.C.	93	180	290	678	1540	—	—	98	190	306	714	1600	—	—
10" W.C.	132	255	411	958	2170	—	—	139	268	432	1010	2300	—	—
20" W.C.	186	360	581	1355	3100	4800	6720	196	379	611	1427	3300	5100	7140
1 PSID	219	424	683	1595	3800	5900	8260	231	446	720	1680	4100	6300	8800
2 PSID	310	599	966	2254	5200	8000	11,200	326	631	1017	2375	5500	8800	12,300
3 PSID	379	733	1182	2759	6500	10,240	15,340	399	772	1245	2907	6700	11,000	16,400
4 PSID	437	846	1364	3185	7000	11,200	15,700	461	891	1437	3355	7400	12,200	17,100
5 PSID	489	945	1524	3559	7800	13,000	18,200	515	996	1606	3749	8280	13,400	18,800

1100 and 1200 PSIG Inlet Pressure Model KL Filter Capacities (MSCFH)

Differential Pressure (Line Taps)	Filter Size (1100 PSIG Inlet Pressure)							Filter Size (1200 PSIG Inlet Pressure)						
	2"	3"	4"	6"	8"	10"	12"	2"	3"	4"	6"	8"	10"	12"
0.5" W.C.	32	63	101	237	—	—	—	34	66	106	247	—	—	—
1" W.C.	46	89	143	335	—	—	—	48	93	150	349	—	—	—
5" W.C.	103	199	321	748	—	—	—	107	208	335	781	—	—	—
10" W.C.	145	281	453	1058	2470	—	—	152	293	473	1105	2650	—	—
20" W.C.	205	397	641	1496	3450	5400	7560	214	415	669	1562	3600	—	—
1 PSID	242	468	754	1761	4250	6600	9240	252	488	787	1838	4400	6800	9500
2 PSID	342	661	1066	2489	5700	9300	13,000	357	690	1113	2599	5900	9600	13,400
3 PSID	418	810	1305	3047	6840	11,700	17,400	437	845	1363	3181	7090	12,400	18,400
4 PSID	483	934	1507	3517	7750	12,800	18,100	504	976	1573	3672	8100	13,400	18,800
5 PSID	540	1044	1684	3930	8600	13,900	19,300	563	1090	1758	4104	9000	14,300	20,000

Capacities based upon natural gas with a specific gravity of 0.6

Model KL Filter - Capacity Performance

1300 and 1400 PSIG Inlet Pressure Model KL Filter Capacities (MSCFH)

Differential Pressure (Line Taps)	Filter Size (1300 PSIG Inlet Pressure)							Filter Size (1400 PSIG Inlet Pressure)						
	2"	3"	4"	6"	8"	10"	12"	2"	3"	4"	6"	8"	10"	12"
0.5" W.C.	35	68	110	257	—	—	—	37	71	114	267	—	—	—
1" W.C.	50	97	156	363	—	—	—	52	100	161	377	—	—	—
5" W.C.	112	216	348	813	—	—	—	116	224	361	843	—	—	—
10" W.C.	158	305	492	1149	2730	—	—	164	317	511	1192	—	—	—
20" W.C.	223	432	696	1625	3700	—	—	231	448	722	1686	3800	—	—
1 PSID	263	508	819	1912	4500	7000	9800	272	527	850	1984	4600	—	—
2 PSID	371	718	1158	2704	6100	9950	13,900	385	745	1201	2805	6350	10,300	14,400
3 PSID	454	879	1418	3310	7350	13,000	19,000	471	912	1471	3434	7580	13,800	19,500
4 PSID	525	1015	1637	3820	8400	14,200	19,900	544	1053	1698	3964	8750	15,000	20,900
5 PSID	586	1134	1829	4270	9400	15,300	21,400	608	1177	1898	4430	9780	16,200	22,700

1480 PSIG Inlet Pressure Model KL Filter Capacity (MSCFH)

Differential Pressure (Line Taps)	Filter Size						
	2"	3"	4"	6"	8"	10"	12"
0.5" W.C.	37	72	116	270	—	—	—
1" W.C.	52	102	164	382	—	—	—
5" W.C.	117	227	366	855	—	—	—
10" W.C.	165	321	518	1209	—	—	—
20" W.C.	235	454	732	1709	3900	—	—
1 PSID	276	534	862	2012	4750	—	—
2 PSID	391	756	1218	2844	6550	—	—
3 PSID	478	925	1492	3482	7800	14,400	20,800
4 PSID	552	1068	1722	4019	9000	15,400	21,600
5 PSID	617	1193	1924	4492	10,000	16,500	23,000

0.50 and 1 barg Inlet Pressure Model KL Filter Capacities (SCMH)

Differential Pressure (Line Taps)	Filter Size (0.50 barg Inlet Pressure)							Filter Size (1 barg Inlet Pressure)						
	2"	3"	4"	6"	8"	10"	12"	2"	3"	4"	6"	8"	10"	12"
1 mbar	115	223	359	839	1931	3255	4557	133	257	415	969	2239	3892	5449
2 mbar	163	315	508	1190	2531	4551	6364	188	364	587	1370	3175	5543	7750
5 mbar	257	498	802	1870	5551	10,556	14,778	297	575	927	2160	7301	12,362	17,307
10 mbar	363	703	1130	2640	8210	15,085	21,119	420	812	1310	3060	10,494	17,500	24,500
20 mbar	512	990	1600	3730	11,718	21,749	30,142	592	1150	1850	4310	14,728	25,158	35,280
50 mbar	801	1550	2500	5830	14,624	26,079	—	929	1800	2900	6770	17,537	28,007	44,100
100 mbar	1110	2150	3470	8110	—	—	—	1300	2510	4050	9440	24,069	41,104	55,440
150 mbar	1340	2590	4180	9750	—	—	—	1570	3030	4890	11,400	30,016	49,994	—
250 mbar	1660	3220	5190	12,100	—	—	—	1970	3810	6140	14,300	—	—	—
350 mbar	1890	3650	5890	13,700	—	—	—	2260	4370	7050	16,500	—	—	—

2 and 3 barg Inlet Pressure Model KL Filter Capacities (SCMH)

Differential Pressure (Line Taps)	Filter Size (2 barg Inlet Pressure)							Filter Size (3 barg Inlet Pressure)						
	2"	3"	4"	6"	8"	10"	12"	2"	3"	4"	6"	8"	10"	12"
1 mbar	163	315	508	1190	2836	4553	6384	188	364	587	1370	3224	4838	6772
2 mbar	230	446	719	1680	3965	6852	9587	266	515	830	1940	4523	7738	10,840
5 mbar	364	704	1140	2650	9125	15,708	21,991	420	814	1310	3060	10,458	17,948	25,127
10 mbar	514	995	1600	3750	13,244	22,820	31,898	594	1150	1850	4330	14,988	26,544	37,016
20 mbar	726	1410	2270	5290	18,732	32,956	46,172	839	1620	2620	6110	21,210	39,270	54,978
50 mbar	1140	2210	3560	8320	23,183	37,219	59,612	1320	2560	4120	9630	28,449	47,376	65,016
100 mbar	1600	3100	5000	11,700	31,332	51,856	72,436	1860	3590	5800	13,500	35,126	60,410	84,574
150 mbar	1950	3760	6070	14,200	38,528	63,560	88,480	2260	4370	7050	16,500	43,540	71,960	100,744
250 mbar	2470	4770	7700	18,000	43,960	73,220	—	2880	5570	8990	21,000	50,186	81,340	113,876
350 mbar	2870	5540	8940	20,900	—	—	—	3360	6510	10,500	24,500	55,426	93,450	130,830

Capacities based upon natural gas with a specific gravity of 0.6

Model KL Filter - Capacity Performance

4 and 5 barg Inlet Pressure Model KL Filter Capacities (SCMH)

Differential Pressure (Line Taps)	Filter Size (4 barg Inlet Pressure)							Filter Size (5 barg Inlet Pressure)						
	2"	3"	4"	6"	8"	10"	12"	2"	3"	4"	6"	8"	10"	12"
1 mbar	210	407	656	1530	3558	5360	7501	230	446	719	1680	3867	6042	8459
2 mbar	297	576	928	2170	5029	8568	11,995	326	630	1020	2370	5516	9380	13,132
5 mbar	470	910	1470	3420	11,604	20,026	28,036	515	997	1610	3750	12,692	21,812	30,537
10 mbar	665	1290	2070	4840	16,558	29,344	41,082	728	1410	2270	5300	18,150	31,780	44,492
20 mbar	939	1820	2930	6840	23,509	43,792	61,309	1030	1990	3210	7490	26,026	47,040	65,856
50 mbar	1480	2860	4620	10,800	32,592	56,336	74,368	1620	3140	5060	11,800	35,840	62,020	87,360
100 mbar	2080	4030	6500	15,200	38,730	71,736	100,430	2290	4420	7130	16,600	42,952	77,420	108,388
150 mbar	2540	4910	7920	18,500	47,940	80,080	112,112	2790	5390	8690	20,300	52,618	88,200	123,480
250 mbar	3240	6270	10,100	23,600	55,336	93,072	130,301	3570	6900	11,100	26,000	60,679	104,440	146,216
350 mbar	3800	7340	11,800	27,600	61,746	106,064	148,490	4180	8090	13,100	30,500	67,592	120,680	168,952

10 and 15 barg Inlet Pressure Model KL Filter Capacities (SCMH)

Differential Pressure (Line Taps)	Filter Size (10 barg Inlet Pressure)							Filter Size (15 barg Inlet Pressure)						
	2"	3"	4"	6"	8"	10"	12"	2"	3"	4"	6"	8"	10"	12"
1 mbar	312	604	973	2270	5499	9520	13,328	376	728	1170	2740	6446	12,051	16,872
2 mbar	441	854	1380	3210	7728	12,477	17,472	532	1030	1660	3880	9321	14,011	19,616
5 mbar	698	1350	2180	5080	17,377	29,008	40,824	841	1630	2620	6130	20,977	32,122	45,007
10 mbar	986	1910	3080	7180	24,528	43,960	61,544	1190	2300	3710	8660	29,586	50,428	70,599
20 mbar	1390	2700	4350	10,200	34,888	61,040	85,680	1680	3250	5250	12,200	42,010	71,904	100,666
50 mbar	2200	4260	6870	16,000	52,360	82,880	129,640	2660	5140	8290	19,300	59,657	91,504	142,380
100 mbar	3110	6010	9690	22,600	58,296	99,400	139,216	3750	7260	11,700	27,300	69,580	123,312	172,446
150 mbar	3800	7340	11,800	27,600	71,512	131,600	183,792	4590	8880	14,300	33,400	90,849	157,864	224,437
250 mbar	4880	9440	15,200	35,500	82,376	143,920	201,488	5900	11,400	18,400	43,000	99,484	179,368	251,115
350 mbar	5740	11,100	17,900	41,800	91,000	158,480	222,320	6960	13,500	21,700	50,700	111,160	190,680	266,392

20 and 25 barg Inlet Pressure Model KL Filter Capacities (SCMH)

Differential Pressure (Line Taps)	Filter Size (20 barg Inlet Pressure)							Filter Size (25 barg Inlet Pressure)						
	2"	3"	4"	6"	8"	10"	12"	2"	3"	4"	6"	8"	10"	12"
1 mbar	431	834	1340	3140	7605	14,280	19,992	480	928	1500	3490	—	—	—
2 mbar	610	1180	1990	4440	10,730	16,464	23,050	678	1310	2120	4940	—	—	—
5 mbar	964	1870	3010	7020	23,968	36,960	51,744	1070	2080	3350	7810	—	—	—
10 mbar	1360	2640	4250	9930	33,152	56,560	79,184	1520	2930	4730	11,000	—	—	—
20 mbar	1930	3730	6010	14,000	48,160	80,080	112,112	2140	4150	6690	15,600	—	—	—
50 mbar	3050	5890	9500	22,200	63,112	100,800	152,600	3390	6560	10,600	24,700	—	—	—
100 mbar	4300	8320	13,400	31,300	81,816	143,360	200,592	4790	9260	14,900	34,900	—	—	—
150 mbar	5260	10,200	16,400	38,300	110,320	177,520	259,056	5860	11,300	18,300	42,700	—	—	—
250 mbar	6780	13,100	21,100	49,300	116,312	209,440	292,320	7550	14,600	23,500	55,000	—	—	—
350 mbar	8000	15,500	25,000	58,300	129,360	234,080	327,600	8910	17,200	27,800	64,900	—	—	—

30 and 40 barg Inlet Pressure Model KL Filter Capacities (SCMH)

Differential Pressure (Line Taps)	Filter Size (30 barg Inlet Pressure)							Filter Size (40 barg Inlet Pressure)						
	2"	3"	4"	6"	8"	10"	12"	2"	3"	4"	6"	8"	10"	12"
1 mbar	524	1010	1630	3810	8058	—	—	602	1170	1880	4390	9257	—	—
2 mbar	741	1430	2310	5390	13,100	19,166	26,813	852	1650	2660	6200	15,058	22,008	31,024
5 mbar	1170	2270	3650	8530	28,266	42,308	59,122	1350	2610	4200	9810	33,600	44,520	62,328
10 mbar	1660	3200	5170	12,100	40,964	64,274	89,984	1900	3690	5940	13,900	47,824	69,328	97,059
20 mbar	2340	4530	7310	17,100	60,340	88,270	123,578	2690	5210	8400	19,600	70,280	94,360	132,104
50 mbar	3700	7160	11,500	27,000	69,846	112,140	163,254	4260	8240	13,300	31,000	84,000	124,320	174,608
100 mbar	5230	10,100	16,300	38,100	101,500	160,720	224,280	6020	11,600	18,800	43,800	119,560	179,200	250,880
150 mbar	6400	12,400	20,000	46,600	135,408	201,880	294,784	7360	14,200	23,000	53,600	154,560	226,240	330,512
250 mbar	8250	16,000	25,700	60,100	140,084	233,660	326,200	9500	18,400	29,600	69,200	160,048	264,320	369,040
350 mbar	9740	18,900	30,400	71,000	154,280	262,640	366,380	11,200	21,700	35,000	81,700	176,400	297,360	415,520

Capacities based upon natural gas with a specific gravity of 0.6

Model KL Filter - Capacity Performance

50 and 60 barg Inlet Pressure Model KL Filter Capacities (SCMH)

Differential Pressure (Line Taps)	Filter Size (50 barg Inlet Pressure)							Filter Size (60 barg Inlet Pressure)						
	2"	3"	4"	6"	8"	10"	12"	2"	3"	4"	6"	8"	10"	12"
1 mbar	672	1300	2100	4890	—	—	—	735	1420	2290	5350	—	—	—
2 mbar	950	1840	2960	6920	16,835	—	—	1040	2010	3240	7570	18,564	—	—
5 mbar	1500	2910	4690	10,900	37,870	—	—	1640	3180	5130	12,000	42,112	—	—
10 mbar	2120	4110	6630	15,500	54,180	77,350	77,910	2320	4500	7250	16,900	59,416	—	—
20 mbar	3000	5810	9370	21,900	78,050	106,050	148,260	3290	6360	10,200	23,900	85,120	129,360	181,104
50 mbar	4750	9190	14,800	34,600	92,680	137,550	192,570	5190	10,000	16,200	37,800	103,040	161,000	225,400
100 mbar	6710	13,000	20,900	48,900	134,050	195,300	273,420	7340	14,200	22,900	53,500	143,080	219,800	307,720
150 mbar	8220	15,900	25,600	59,800	165,900	251,160	367,920	8990	17,400	28,000	65,500	180,320	280,336	418,096
250 mbar	10,600	20,500	33,100	77,200	177,240	289,100	403,900	11,600	22,400	36,200	84,400	192,640	311,920	437,080
350 mbar	12,500	24,200	39,100	91,200	196,910	326,900	458,500	13,700	26,500	42,800	99,800	215,292	359,800	503,720

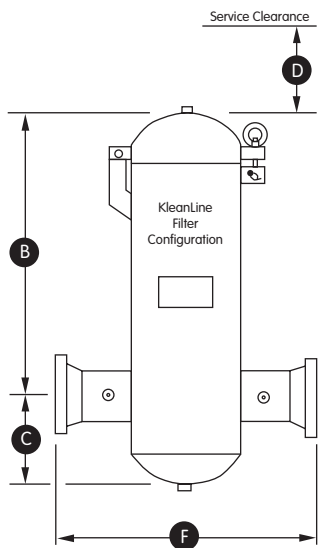
70 and 80 barg Inlet Pressure Model KL Filter Capacities (SCMH)

Differential Pressure (Line Taps)	Filter Size (70 barg Inlet Pressure)							Filter Size (80 barg Inlet Pressure)						
	2"	3"	4"	6"	8"	10"	12"	2"	3"	4"	6"	8"	10"	12"
1 mbar	793	1530	2470	5770	—	—	—	847	1640	2640	6170	—	—	—
2 mbar	1120	2170	3500	8160	—	—	—	1200	2320	3740	8720	—	—	—
5 mbar	1770	3430	5530	12,900	—	—	—	1890	3660	5910	13,800	—	—	—
10 mbar	2510	4850	7820	18,300	65,114	—	—	2680	5180	8350	19,500	72,184	—	—
20 mbar	3540	6860	11,100	25,800	93,030	144,060	201,684	3790	7330	11,800	27,600	99,120	—	—
50 mbar	5600	10,800	17,500	40,800	115,430	177,660	248,248	5990	11,600	18,700	43,600	121,520	188,160	263,088
100 mbar	7920	15,300	24,700	57,700	154,840	248,500	347,340	8460	16,400	26,400	61,600	162,960	265,440	370,720
150 mbar	9700	18,800	30,300	70,600	188,188	310,940	463,400	10,400	20,000	32,300	75,500	195,720	339,360	504,000
250 mbar	12,500	24,200	39,000	91,100	208,670	344,120	483,000	13,400	25,900	41,700	97,400	222,880	368,480	518,560
350 mbar	14,800	28,600	46,200	108,000	233,184	377,300	529,340	15,800	30,600	49,300	115,000	247,520	395,920	554,400

90 and 100 barg Inlet Pressure Model KL Filter Capacities (SCMH)

Differential Pressure (Line Taps)	Filter Size (90 barg Inlet Pressure)							Filter Size (100 barg Inlet Pressure)						
	2"	3"	4"	6"	8"	10"	12"	2"	3"	4"	6"	8"	10"	12"
1 mbar	898	1740	2800	6540	—	—	—	946	1830	2950	6890	—	—	—
2 mbar	1270	2460	3960	9240	—	—	—	1340	2590	4170	9740	—	—	—
5 mbar	2010	3880	6260	14,600	—	—	—	2110	4090	6600	15,400	—	—	—
10 mbar	2840	5490	8850	20,700	—	—	—	2990	5780	9330	21,800	—	—	—
20 mbar	4010	7760	12,500	29,200	103,740	—	—	4230	8180	13,200	30,800	110,436	—	—
50 mbar	6340	12,300	19,800	46,200	126,140	—	—	6680	12,900	20,900	48,700	134,506	—	—
100 mbar	8970	17,400	28,000	65,300	171,150	279,090	389,900	9450	18,300	29,500	68,800	185,476	—	—
150 mbar	11,000	21,300	34,300	80,000	206,122	365,120	532,700	11,600	22,400	36,100	84,300	220,872	407,765	588,994
250 mbar	14,200	27,400	44,200	103,000	235,690	398,720	558,600	14,900	28,900	46,600	109,000	254,853	436,082	611,647
350 mbar	16,800	32,400	52,300	122,000	262,732	429,660	601,020	17,700	34,200	55,100	129,000	283,170	467,231	651,291

KleanLine® Dimensions



Model Number	Connection Size	Dimensions				Max. Working Pressure		
		B	C	D	F	175/275	740	1480
KLM-2	2" NPT (F)	14	5	5	11	39	—	—
KLM-2	2" NPT (M)	14	5	5	11	39	—	—
KLM-2	2" Socket-Weld	14	5	5	8	39	—	—
KLM-2	2" Flanged	14	5	5	11	47	—	—
KL-2	2" Flanged	18	6	12	17	85	260	300
KL-3	3" Flanged	21	7	12	18	95	300	390
KL-4	4" Flanged	28	9	14	20	200	423	682
KL-6	6" Flanged	29	12	20	24	230	478	876
KL-8	8" Flanged	42	14	28	28	745	1,114	1,818
KL-10	10" Flanged	56	18	22	32	1,241	1,901	4,005
KL-12	12" Flanged	51	19	20	40	1,531	3,100	5,100

Model Number	Pressure Rating	Element Size	Number Required	Part Number 25 mic. element	Part Number 10 mic. element	"O"-Ring Part Number	Gasket Part Number
KLM-2	175	4" x 8-1/8"	1	—	78155P041	52939P016	—
KL-2	175	6" x 8-1/2"	1	78155P018	78155P017	52939P001	—
	275	6" x 8-1/2"	1	"	"	52939P001	—
	740	6" x 8-1/2"	1	"	"	—	52939P003
	1480	6" x 8-1/2"	1	"	"	—	52939P004
KL-3	175	6" x 8-1/2"	1	78155P018	78155P017	52939P001	—
		6" x 4"	1	78155P020	78155P019	—	—
	275	6" x 8-1/2"	1	78155P018	78155P017	52939P001	—
		6" x 4"	1	78155P020	78155P019	—	—
	740	6" x 8-1/2"	1	78155P018	78155P017	—	52939P003
		6" x 4"	1	78155P020	78155P019	—	—
	1480	6" x 8-1/2"	1	78155P018	78155P017	—	52939P004
		6" x 4"	1	78155P020	78155P019	—	—
KL-4	175	8" x 8-1/2"	2	78155P022	78155P021	52939P002	—
	275	8" x 8-1/2"	2	"	"	52939P002	—
	740	8" x 8-1/2"	2	"	"	—	52939P005
	1480	8" x 8-1/2"	2	"	"	—	52939P006
KL-6 (prior to 5-2003)	175	8-1/2" x 14-1/2"	1	78155P031	78155P030	52939P002	—
	275	8-1/2" x 14-1/2"	1	"	"	52939P002	—
	740	8-1/2" x 14-1/2"	1	"	"	—	52939P005
	1480	8-1/2" x 14-1/2"	1	"	"	—	52939P006
KL-6 (after 5-2003)	175	8" x 18"	1	—	78155P042	52939P017	—
	275	8" x 18"	1	—	"	52939P017	—
	740	8" x 18"	1	—	"	—	52939P018
	1480	8" x 18"	1	—	"	—	52939P019
KL-8	175	10-1/2" x 26"	1	78155P033	78155P032	—	52939P007
	275	10-1/2" x 26"	1	"	"	—	52939P007
	740	10-1/2" x 26"	1	"	"	—	52939P008
	1480	10-1/2" x 26"	1	"	"	—	52939P009
KL-10	175	15-3/4" x 20-5/8"	2	78155P035	78155P034	—	52939P010
	275	15-3/4" x 20-5/8"	2	"	"	—	52939P010
	740	15-3/4" x 20-5/8"	2	"	"	—	52939P011
	1480	15-3/4" x 20-5/8"	2	"	"	—	52939P012
KL-12	175	18" x 18"	2	78155P037	78155P036	—	52939P013
	275	18" x 18"	2	"	"	—	52939P013
	740	18" x 18"	2	"	"	—	52939P014
	1480	18" x 18"	2	"	"	—	52939P015

Other Technical Data

- Temperature rating = 180°F.
- 1/4" NPT differential taps are standard for Model KL filters only.
- 1/2" NPT drain and 1/4" vent are standard on all models.
- Housings are built to ASME Sect. Viii, Div. 1 Pressure Vessel Code and "U" or "UM" stamped where applicable.

KleanLine® Series Filter Options

Model	Type	Connection Size	Connection Type	Maximum Working Pressure	Element Rating
KL	Pilot	1/4" x 90° 1/4" x 180°	NPT(F)	1000 PSIG	5 Micron
KL	In-Line	3/4" NPT(F) 1" NPT(F) 1-1/2" NPT(F) 2" NPT(F)	NPT(F)	160 PSIG	5 Micron
KLM	Upright	2"	NPT (F), BSP-TR(F) ANSI 150 Flanged Socket-Weld	175 PSIG	5 Micron 10 Micron
KL	Upright	2" 3" 4" 6" 8" 10" 12"	ANSI 125 Flanged ANSI 150 Flanged ANSI 300 Flanged ANSI 600 Flanged	175 PSIG 275 PSIG 740 PSIG 1480 PSIG	5 Micron 10 Micron 25 Micron

How to Order

To order an Elster American Meter KleanLine® filter, please specify:

1. Filter Model
2. Connection Size
3. Connection Type
4. Maximum Working Pressure
5. Filter Element Rating

About Elster Group

A world leader in advanced metering infrastructure, integrated metering, and utilization solutions to the gas, electricity and water industries. Elster's metering and system solutions reflect over 170 years of knowledge and experience in measuring precious resources and energy.

Elster provides solutions and advanced technologies to help utilities more easily, efficiently and reliably obtain and use advanced metering intelligence to improve customer service, enhance operational efficiency, and increase revenues. Elster's AMI solutions enable utilities to cost-effectively generate, deliver, manage, and conserve the life-essential resources of gas, electricity, and water.

Elster has a staff of over 7,500 serving customers globally in North America, Central America, South America, Europe, Asia, Africa and the Middle East.

Elster Meter Services
2221 Industrial Road
Nebraska City, NE 68410-6889
USA

T +1 402 873 8200
F +1 402 873 7616

www.elster-meterservices.com

© 2008 Elster Meter Services. All rights reserved.
® Registered trademark of Elster Meter Services.

Information contained herein is subject to change without notice. Product specifications may change. Contact your Elster Meter Services representative for the most current product information. Printed in the United States.

EMS-TB12521.4-EN-P - December 2008
Supersedes SB12521.3